

Historic, Archive Document

Do not assume content reflects current scientific knowledge, policies, or practices.



Bulbs ADVANCE OFFERING
1925

STUMPP & WALTER CO.
30 & 32 BARCLAY ST., NEW YORK



Narcissus Conspicuous. One of the charming Barrii types listed on page 22 of this catalogue

**SPECIAL
NOTICE!**

Last Year to Import Holland Narcissi

The Federal Horticultural Board of the Department of Agriculture has decided that Narcissi or Daffodils, as well as the following miscellaneous bulbs, Chionodoxa, Eranthis, Fritillaria, Galanthus (Snowdrops,) Grape Hyacinths, Ixias, and Scillas will not be allowed entry into our country after January, 1926.

Ninety-five per cent of these lovely spring-flowering bulbs are now imported from Holland. We urge our patrons to plant as many as possible this year, so that their gardens will be well supplied. See our back cover for Special Offer of Daffodils for border planting or naturalizing.

Purpose of Illustrations. The illustrations throughout our Advance Offering have been made from actual photographs of gardens of some of our patrons to whom we have supplied bulbs, in many cases for the past ten or more years, and are used with the hope that they may assist the reader to better visualize the possibilities of their use.

HIGH QUALITY BULBS WHY WE USE THE EXPRESSION AND HOW WE ENDEAVOR TO MAINTAIN IT

High Quality Bulbs are bulbs of proper flowering age, grown in a careful manner; thoroughly ripened and cured; and selected for size. The bulbs listed in this Advance Offering are grown in Bermuda, California, Japan, France, but principally in Holland. We contract with growers only for each variety listed. No grower in Holland, for example, grows all the varieties of Dutch bulbs offered by us. Therefore, we place advance contracts for the various varieties with specialists. The bulbs are carefully packed and shipped to us in the autumn.

On their arrival in New York they are immediately unpacked so as to avoid becoming "heated" and carefully arranged in our own building, examined and passed on by thoroughly trained men.

Special Import Orders. We do not solicit your order on the basis of special importation and subject it to the possibility of long transportation delay from the country of origin to your home, and then have you assume the risk of having the bulbs arrive "heated," thereby destroying the embryo flower.

Quality versus Price. We give complete assurance that no better bulbs can be purchased from any reputable **Bulb Specialist** at cheaper prices than those sent out by us. If you think so when you get our bulbs, we ask you to return them, transportation collect.

A careful perusal and comparison of the prices will convince you that they are **lower** than those of some **Specialists** who offer good quality. This is due to the fact that we contract for large quantities and do not send miscellaneous small orders to our **Holland, French, Japanese, California, and Bermuda growers.**

STUMPP & WALTER CO.

GEORGE G. STUMPP, *President*
JULIAN H. WALTER, *Treasurer*

NEW YORK

THOMAS F. KEARNEY, *Ass't Treasurer*
WILLIAM A. SPERLING, *Secretary*

Why We Ask for Your Order by July 15

ORDER NOW AND SAVE MONEY

Our growers in Holland, France and Japan inform us that we will be obliged to pay increased prices on later contracts this year. This will make it necessary to increase prices in our Fall Catalogue. We suggest placing your order now and enjoy this saving. Don't wait until July 15, but send us your order NOW.

TIME OF DELIVERY

Bulbs and roots mature and ripen during the late summer and autumn and shipments will be made as follows in the absence of instructions to the contrary.

SEPTEMBER—includes **Lilium Harrisii**, **Lilium formosum**, **Lilium candidum**, Freesias, Paper-White and Grand Soleil d'Or Narcissi, and Bulbous Irises.

OCTOBER OR MAIN SHIPMENT includes the general line of bulbs, such as Hyacinths, Tulips, Crocus, and Callas.

NOVEMBER AND DECEMBER—includes Liliums and Lilies-of-the-Valley. We endeavor to get all Liliums and Lilies-of-the-Valley shipped by early December. We, however, frequently do not receive the **three varieties of Japanese Lilies**, as listed on pages 26 and 27, namely, **auratum**, **speciosum magnificum**, and **album** from the Orient until the ground has become frozen in some parts of the country. These may be kept in a cool cellar and planted in the spring, or, if you so advise, we can ship these three items in the spring.

Guarantees. Our method of handling bulbs practically precludes the possibility of stock proving unsatisfactory, and the percentage of complaints is really negligible. We guarantee all bulbs sent out to be true to name and of proper flowering age. It is, however, impracticable, owing to contingencies of soil, climate, season, or faulty planting, to guarantee that all bulbs we send out will flower satisfactorily. We make complete trials of all the varieties we send out at our own trial-grounds and know, from extended experience, that all our bulbs flower satisfactorily if given just ordinary attention.

Planning the Garden. In the past we have had many customers and friends who have asked us to help them plan their bulb-gardens. We will be very glad to make suggestions, if you will send us a rough sketch of your garden or borders. Please give planting areas when sending same.

COLOR SCHEMES

TERMS OF PAYMENT

We do not send bulbs C. O. D. unless you request it, but ship your order when bulbs arrive, mailing invoices at the same time, and all bills are due in 30 days, net.

For those who desire to send us cash with the order, and thereby forfeit the use of the interest on the same from the time they send it until bulbs are shipped, we ask that they **deduct a cash discount** of 5 per cent **from their order to compensate them for this loss.**

WE FURNISH ALL BULBS, 6 of a variety, at the dozen rate; 25 of a variety at 100 rate; 250 of a variety at 1,000 rate.

SHIPPING INSTRUCTIONS

We ask for full shipping directions. State whether bulbs are to be shipped by parcel post or express, and by what route. In the absence of instructions we ship by whatever method and route we believe best.



Darwin, Breeder, and Cottage Tulips in flower during May, planted in irregular clumps among hardy perennials which happily take their place after the Tulips have finished blooming. The irresistible appeal which these gorgeous, easily-grown flowers make to our children is noted. It was the writer's privilege and pleasure to snap this little girl unawares.

Bulbous Flowers in Your Home from Christmas to Easter. On page 31 of this special offering we have endeavored to suggest a few of the popular medium-priced bulbs which can be planted in the autumn in flower-pots and grown in successive batches in the living-room window or conservatory during the winter months.



A hardy border illustrating the use of Darwin Tulips, planted in clumps throughout

GIANT DARWIN TULIPS, May-Flowering

For the herbaceous border, massed in clumps along the edge of shrubbery, or as cut-flowers for vases, these are conceded to be the superior of all the Tulips

The enthusiasm for the Darwin Tulip is not due to fad or popular fancy, but rather to an awakened sense of appreciation of their majestic beauty. The rich, bright colors of the blooms, their somber tones, their many pale and more lovely colors, produced on strong, gigantic stems from 2 to 3 feet, all vie with one another and capture even the casual observer of spring-flowering bulbs. Once grown, the amateur becomes interested and soon becomes a fancier with a hoard of varieties, excusably jealous of every one he or she grows.

For the borders among other hardy flowers, in formal gardens in conjunction with Single Early Tulips, for isolated groupings against a background of shrubs, or for combinations of delicate colors for effects of contrast in the flower-garden, the Darwins are without a peer.

They range in color from the daintiest pink, rose, salmon, red, etc., to deep, rich crimson; from lavender through mauve and light blue to violet-purple and the so-called "Black Tulip." There are a few good whites, but no clear yellow, and where this color is desired, selection should be made from the Cottage Tulips listed on pages 10 and 11. All buff and bronze shades frequently classed as Darwins are Breeders.

CULTURE.—Bulbs should be planted 5 to 6 inches deep and not less than 5 inches apart. Sand to the depth of 1/2 inch at the base of the bulbs will amply repay the trouble by the provision for drainage during wet weather. For forcing, bulbs should be planted as soon as received, and the flowers appear to better advantage if pots a trifle deeper than the ordinary bulb-pans are used. We recommend what are termed azalea-pots for this purpose. A temperature of 55 to 60 degrees is recommended, for if allowed to "come gently," larger flowers and longer stems may be had.

Afterglow. Deep, rosy orange, with salmon shading at edges of petals; inside deep orange with yellowish base. A sport of *Baronne de la Tonnaye*, which is of remarkable interest because it is the first instance of a Darwin sporting to the Breeder tones. A showy Tulip for outdoors. Height 26 inches. \$2 50 \$20 00

Anton Mauve. A splendid exhibition variety on account of its wonderful stately habit. The flower is of unusually large size, and an even tone of deep bluish lilac. Excellent for the border or for pots. Height 32 inches. 1 50 12 00

Aphrodite. Clear, silvery rose-pink with white base; a good-sized round flower of exquisite color on a very tall, stiff stem. Height 34 inches. 2 50 20 00

Baronne de la Tonnaye. A long and beautiful flower; clear carmine-rose at the midrib, base toning off to soft pink at the edges; white, tinged blue. Excellent for early March forcing and just as fine for outdoor beds, where it keeps up a splendid show for a long time. Height 26 inches. 70 5 00 \$48 00

Bartigon. Fiery crimson, a very showy variety with white base. Height 26 inches. 1 10 8 00 78 00

Bleu Celeste. A Tulip of wonderful size and shape; the color is a bright violet-purple, white base tinged blue. Height 30 inches. \$2 00 \$15 00

Carl Becker. Pale rosy violet, with center flushed salmon-rose. Splendid Darwin for outdoors; equally good for forcing, but paler in color. Height 32 inches. 70 5 00 \$48 00

Centenaire. Rich violet-rose, with a large blue center; immense flower of perfect form. Magnificent for the border; excellent for forcing. Height 32 in. 1 30 10 00

City of Haarlem. Intense dark scarlet with darker bloom; large steel-blue base and white halo; wonderful cup-shaped flower, with petals incurving slightly at the tips. One of the finest brilliant red Darwins. Height 27 inches. 4 00 30 00

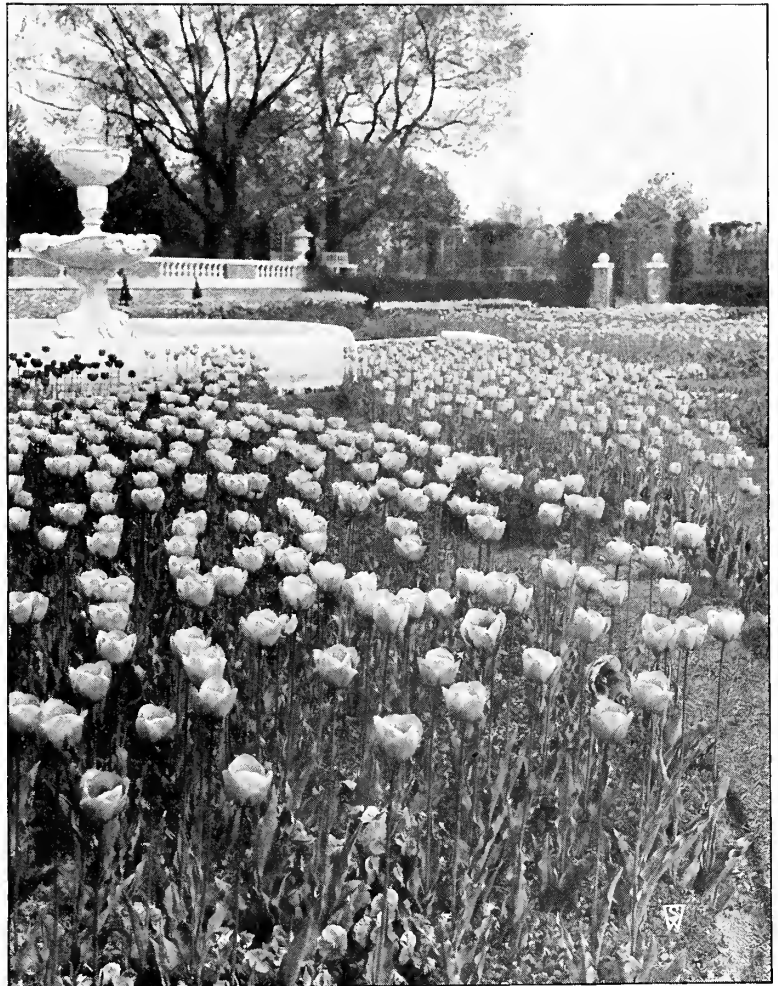
Clara Butt. Beautiful clear salmon-pink. No other variety offered by us has the same distinctive and pleasing color. Height 22 inches. 60 4 00 38 00

Crepuscule. Lilac-white, with dark, rosy flush at tips of petals; large flower of good form and a very lovely color when grown indoors. Height 28 inches. 1 00 7 00 68 00

Giant Darwin Tulips (May-Flowering), continued

Dal Ongaro. Pale lavender-violet, inside dark bluish violet, shading off into paler violet; large flower with pure white base and showy white mid-rib. Height 28 inches.....	Doz.	100	1,000	
	\$1 00	\$7 00	\$68 00	
Dream. Large flower, perfect in form, on a tall, strong stem; color rosy lilac and mauve, with claret-purple interior. Height 24 inches.....	60	4 00	38 00	
Duchess of Hohenberg. Pale slaty lilac-mauve, with stripe of rosy heliotrope; inside pale lilac, with white base. Enormous, long flower on a tall, stiff stem. Height 29 inches.	2 00	15 00		
Eclipse. A deep rich glowing blood-red. Large flower of fine form; the best of its color. Height 26 inches.....	2 00	15 00		
Edmee (Beauty). A beautiful shade of cherry-rose with a lighter border. On the order of Baronne de la Tonnaye, but brighter in color. Height 25 inches.....	70	5 00	48 00	
Erguste. Soft violet, with a slight silvery flush; flower medium size. One of the best Darwins for forcing, keeping its refined color splendidly. Height 26 inches.	85	6 00	58 00	
Europe. Deep, fiery crimson, with white base. Stems of medium length; flowers large and erect, the white base contrasting well when the flower opens. Height 20 inches.....	85	6 00	58 00	
Euterpe. A beautiful shade of mauve, edged lilac, white center, with a blue halo. A very refined color when forced. Height 26 in....	Doz.	100	1,000	
	\$0 85	\$6 00	\$58 00	
Farncombe Sanders. A bright shade of scarlet, with a clear white base, contrasting well when the flower is fully open. A broad-petaled flower of large size. Fine for forcing or the border. Height 25 in.....	85	6 00	58 00	
Faust. Satiny purple, with blue base; very large flower of fine form; a splendid Tulip. Height 30 inches....	1 20	9 00	88 00	
Flamingo. An even tone of pale shell-pink. A very exquisitely colored Darwin, of refined coloring and form. Height 28 inches.	1 10	8 00	78 00	
Giant. A flower of enormous size and of wonderful substance; a deep reddish purple in color, shaded violet with a white base. Height 30 in.....	2 00	15 00		
Glow. The deepest shade of crimson-scarlet—a color of wonderful brilliance, not unlike that of the Oriental poppy. The flowers are of large size, borne on stems 20 inches long....	1 00	7 00	68 00	
Gryphus. Dark violet-purple, with a white base; a flower of splendid shape. A good border variety. Even more beautiful in color when forced. Height 26 in.....	1 10	8 00	78 00	
Jubilee. Blue-purple, with a white base, marked blue; a flower of large size and heavy substance. Height 29 inches.....	2 00	15 00		
King Harold. Intense ruby-crimson, center rich black; very tall and of fine form; new and stately variety; very distinct. Height 24 inches.....	85	6 00	58 00	

King George V. Glowing salmon-scarlet, shaded bright rose; inside brilliant orange-scarlet with blue base. A flower of intense color for outdoors. Height 25 inches.....	Doz.	100	1,000	
	\$5 00	\$40 00		
La Fiancee. Deep rose, shading to old-rose and delicate pink at the edges, with blue base. A splendid variety of large size, and very effective when planted with mauve and dark lavender sorts. Height 30 inches.....	4 00	30 00		
La Tristesse. Deep slaty blue, with white base, very distinct in color; medium-sized flower. Height 26 inches.....	85	6 00	58 00	
La Tulipe Noire (The Black Tulip). The nearest in color to the so-called "Black Tulip." Deep maroon-black, which has a velvety sheen in the sunlight. Height 25 inches.....	1 00	7 00	68 00	
Le Notre. Beautiful shade of bright pink, blue base starred white. Used for exhibition purposes on account of the very large size of the flower and its strong stem. Height 26 inches.....	1 25	10 00	98 00	
Louise de la Valliere. Brilliant cherry-rose with pale blue base starred white. A very clear and beautiful color. Height 24 inches.	3 50	25 00		



A Dutch Bulb Garden—Darwin Tulips, one variety to each of the various and pleasingly shaped beds

Giant Darwin Tulips (May-Flowering), continued



Darwin Tulip, Rev. Ewbank, planted along the shrubbery border

Mme. Barrois. Dull lilac-rose, with soft rose margin which changes with age to pale flesh-white; bluish base. A fine new Darwin of very attractive tone. Height 25 inches.....\$2 00 \$15 00

Madame Krelage. Bright rosy lilac, with a pale silvery margin. A good forcing variety and excellent for the border as well. Height 28 in... I 00 7 00 \$68 00

Madame Raven. Dark cherry-rose, edged rosy white; white base, blue halo; medium-size flower of perfect shape. A variety of the same general character as Edmee or Mme. Krelage, but with sharper contrast between the dark rose and almost clear white edge. Height 25 in. I 20 9 00 88 00

Marconi. Deep purple when the flower first opens, gradually changing to ashy purple as the flower ages; pure white base. Height 27 inches 85 6 00 58 00

Margaret. Pale rose ground, faintly flushed white, center white, marked blue—a very delicate color; flower globular in shape, borne on a strong stem. Splendid for forcing. Height 22 inches.... 60 4 00 38 00

Massachusetts. A long and beautiful flower; clear carmine-rose at the midrib, toning off to soft pink at the edges, the inside of the white base delicately tinged blue. Height 26 inches. 85 6 00 58 00

Massenet. An exquisite shade of pale rose, with a broad margin of creamy white; base bright blue. A grand acquisition to any collection however rare. Height 30 inches..... I 25 10 00

Matchless (Roi d'Islande). Soft old-rose, Doz. 100 1,000 with a narrow white border; inside soft violet-rose with a blue base. A very beautiful soft color and one that forces splendidly. Height 26 inches. \$1 20 \$9 00 \$88 00

Mauve Clair. Soft lilac-mauve, slightly paler at the edges of petals; inside lilac-mauve, with white base. Height 26 inches. 85 6 00 58 00

Melicette. A beautiful pure lavender, shading to paler lavender at the edges, with a beautiful blue base; quite the purest lavender Darwin. A flower of large size. Height 26 inches. I 10 8 00 78 00

Mrs. Potter Palmer. Bright purplish violet, base white; a large flower. Very attractive for border planting. Height 28 inches. 85 6 00 58 00

Mystery. An unusual flower of a deep shiny black color, base blue. A variety used for exhibition purposes on account of its size. Height 30 inches. 2 50 20 00

Nauticas. Dark rose, center clear violet, shaded bronze; large flower. Excellent for outdoors and good for early or late forcing. Height 30 inches. 70 5 00 48 00

Olifant. Smoky lavender of very silvery character, with distinct blue flush on outer petals; pure white base; huge flowers on very tall stems. A very early variety. Height 32 inches. 8 00 60 00

Painted Lady. A pale creamy white, with a faint tinge of heliotrope, gradually becoming almost pure white as the flower ages. A very good forcing variety. Height 27 inches 65 4 50 42 00

Pensee Amere. Slaty violet, with a broad flush at outer petals of rosy lilac, white base. Not a large flower but of exquisite shape. Height 26 in. 80 5 50 52 00

Petrus Hondius. Bright carmine-rose, with a dull blue base starred white. An unusually brilliant variety. Height 28 inches. I 20 9 00 88 00

Philippe de Commines. A grand flower of dark, polished mahogany color, with a purple base. One of the best of the less expensive sorts in this color. Height 24 inches.. 60 4 00 38 00

Pride of Haarlem. Magnificently formed flower of immense size, brilliant, deep rose, shaded scarlet, with light blue base. This variety, perhaps the most widely known for its stately habit and glorious color, is unsurpassed for border planting. Height 36 inches. 70 5 00 48 00

Prince of the Netherlands. Lively shade of cerise-scarlet, edged rose, with a blue base. Height 31 inches I 10 8 00 78 00

Princess Elizabeth (Julie Vinot). Beautiful clear deep pink, changing with age to rose-pink; white base. Large flower of perfect shape, quite like a rose when first open. Splendid for the border or for forcing. Height 26 inches... I 10 8 00 78 00

Princess Mary. Bright carmine-rose with margin of rose-pink; inside clear carmine-rose with blue base and white halo; huge flower on a splendid stem. One of the finest of the new Darwins. Height 28 inches 18 00 140 00

Professor Rauwenhoff. Bright cherry-red, beautiful blue base; very large flower of wonderful substance. Height 24 inches . . . I 00 7 00 68 00

Psyche. Old-rose, edged white, inside lighter rose, base blue. A very grand variety for February forcing. Height 26 inches 70 5 00 48 00

Purple Perfection. The color of the flower is a bright, glossy purple, large in size, and of wonderful substance. A splendid variety in the border on account of its pronounced color and size; grows to the height of 26 inches. I 10 8 00 78 00

Giant Darwin Tulips (May-Flowering), continued

Queen Mary. Lovely shade of cerise-scarlet, edged deep pink, with bright blue base. A large flower of a very clear color. Height 28 inches. Doz. 100 1,000 \$1 20 \$9 00 \$88 00

Raphael. Deep maroon-purple of rich tone, with blue base starred white. Very tall, large flower of sturdy character. The best reddish purple. Height 30 inches. I 30 10 00

Remembrance. Pale lilac, general tone of the flower silvery. Quite distinct; large flower. Height 25 in. 85 6 00 58 00

Reverend Ewbank. An exquisite shade of soft lavender-violet, slightly shaded silver-gray. A variety of great merit on account of its lovely color, borne on stems 23 inches long. 60 4 00 38 00

Ronald Gunn. Bright shade of violet, edged pale lavender, with a conspicuous white base. A flower of splendid shape and, like most varieties near this shade, even more exquisite when grown in pots. Height 26 inches. 85 6 00 58 00

Sir Trevor Lawrence. Violet-maroon, with flush of ashy purple; inside violet-maroon with white base; very large, cup-shaped flower, on tall stem. Splendid in every respect. Height 33 inches. I 10 8 00 78 00

Sophrosyne. Soft rosy lilac, edged silvery white; inside deep rose, with striking dull blue base. A large flower of very delicate beauty. Height 29 inches. 85 6 00 58 00

Suzon. Center of petals buff-rose, shading to blush at the margin, with white base, delicately marked blue. A strong grower of fine stately habit. Height 25 in. 85 6 00 58 00

Spring Beauty. Clear scarlet, with blue-black base and white star; large flower of most refined form, and the handsomest of all scarlet-red Tulips. Height 23 inches. Doz. 100 1,000 \$1 20 \$9 00 \$88 00

The Bishop. Soft bluish violet, with ashy bloom; inside paler, with white base; a long flower of very artistic color. Height 28 inches. 2 50 20 00

Valentin. A magnificent Darwin Tulip of large size and shapely form. A light violet with a blue base. Height 22 inches. I 10 8 00 78 00

Village Maid. Soft rose with whitish base. This variety has a very large flower on a tall stem. Height 30 inches. 2 00 15 00

White Queen. A splendid white variety; when first opening is pale rose but quickly turns white—a truly exquisite color. Height 24 inches. 70 5 00 48 00

William Copeland. Uniform lilac-rose. A variety that was greatly admired in our exhibit of bulbs grown in pots at the New York Flower Show this year. May be forced as early and as easily as the early Tulips. The color, when grown indoors, becomes a most beautiful lavender. Height 24 inches. I 00 7 00 68 00

William Pitt. Very dark crimson, with purplish bloom on the outer petals. Of great size and beauty. Height 24 inches. I 20 9 00 88 00

Zulu. Deep, velvety purple-black; large, egg-shaped flower of very distinct form. Fine for border or forcing. Height 27 inches. 70 5 00 48 00

Superb Prize Mixture. The wonderful interest in these splendid Tulips has brought out a great many varieties too numerous for listing, except those considered the best. In addition to some of the varieties listed above, our mixture contains an equal proportion of many others. Brilliant effects may be obtained by the planting of this mixture of choice named sorts. 60 cts. per doz., \$4 per 100, \$35 per 1,000.



A well-designed and pleasing display of Darwin Tulips

DUTCH BREEDER TULIPS, May-Flowering

Breeder Tulips are very similar in habit to the Darwins, and flower at the same time. Their chief characteristic is their immense blooms, borne on strong, stiff stems, many of them longer than the most gigantic Darwins. The revival of the taste for art colors has made these Tulips, at one time very popular in England, strong favorites with American enthusiasts, who find in their bronze, buff, and brown shades excellent material for contrasting with the light and bright colors of the Darwins. They require the same cultural treatment as the Darwins.



The artistic colors of the Dutch Breeder Tulips lend a distinctive and refined atmosphere to the flower border

Abd-el-Kader. Dull bronze-yellow, shading to light bronze at edge of petals; inside bronze-brown, with olive-green base; good-sized flower. Height 26 inches. Doz. 100 1,000 \$2 00 \$15 00

Apricot. Dull, bronzy buff, shaded deep apricot, base olive-green. A splendid border variety, frequently having an extra number of petals. Height 25 inches. 1 00 7 00 \$68 00

Bacchus. Dark violet-blue, the outside of the petals having a darker bloom, base starred white. Quite the nearest approach to dark blue in late Tulips. Still high in price on account of scarcity. Height 28 inches. 2 00 15 00

Bronze Queen. Soft golden bronze; large flower of sturdy habit. A very exquisite color when forced and splendid for the border. Height 28 in. 70 5 00 48 00

Cardinal Manning. A splendid shade of rosy violet, with a slight edge of bronze. Large-sized flower of fine form. Height 28 inches. 70 5 00 48 00

Copernicus. Light coffee-brown, with slight flush of bronzy old-rose; inside warm brown, with yellow base. A large flower on sturdy stem. A fine example of the brown Breeders. Height 27 inches. 1 30 10 00

Coridion. Clear yellow, with a faint suffusion of lilac; a flower of very dainty color. Fine for shrubby borders. Height 24 inches. 2 00 15 00

Dom Pedro. Coffee-brown, shaded mahogany; inside rich mahogany; large flower; very fragrant. Height 21 in. Doz. 100 1,000 \$1 30 \$10 00 \$98 00

Dryad. Lilac-old-rose, margined bronzy yellow, shading to buff with age; broader margin inside with bright apple-green base. A very beautiful Breeder of which we have only a few bulbs to offer. Height 22 inches. 3 00 20 00

Fairy. Reddish mahogany, with bronze shading; an extra-large flower of artistic character. Splendid in borders or for late forcing. Height 24 inches. 1 10 8 00 78 00

Garibaldi. One of the finest Breeders as yet introduced. Pale lilac-bronze, with a broad primrose-yellow margin. A long and graceful flower. Height 31 inches. 2 00 15 00

General Ney. Dull old-gold with olive base; large flower. Height 25 inches. 1 10 8 00 78 00

Godet Parfait. Dark blue-purple, with white base and blue halo; very large flower of striking color. One of the best Breeders for the border. Height 30 inches. 1 50 12 00

Golden Bronze. Light brownish yellow, with flush of heliotrope; inside rich mahogany-brown, rich yellow base. A large, well-formed flower of attractive appearance. Height 26 in. 1 10 8 00 78 00

Goldfinch. Elegantly formed, large, pointed flower. Rich golden chestnut, inside deep mahogany-brown, yellow base, marked olive. Height 30 inches. 3 50 25 00

Heloise. A beautiful shade of dark brown, shaded old-rose; yellow base, marked olive-green. Large-sized flower of wonderful color and very prettily reflexed petals. Height 28 inches. 2 50 20 00

Indian Chief. Reddish mahogany flushed purple, edged warm brown with age; yellow base. A huge flower of wonderful substance and most artistic shape, carried on a very tall stem. Height 33 inches. 6 50 50 00

Jaune d'Oeuf. Ruddy apricot, inside soft yellow, with black base and anthers; very striking variety. Height 21 inches. 1 00 7 00 68 00

James Watt. A new Breeder of exquisite form and coloring. Deep slaty violet, flushed bronze; inside dark mahogany, shaded brown, fine green base starred white. Height 26 inches. 2 50 20 00

Jules Favre. Beautiful shade of deep bronze, purple flush towards center of petals. Good-sized, globular-shaped flower. Height 27 inches. 1 10 8 00 78 00

Le Mogol. Pale lavender-mauve, flushed white; inside deep mauve-lilac, with beautiful white base and blue halo. A flower of medium size but of exquisite color. Height 26 inches. 1 10 8 00 78 00

Lord Cochrane. Dark brown, with narrow margin of bright bronze-yellow; inside warm brown with yellow base. A striking Breeder because of the clear shade of yellow on the margin. Height 28 inches. 1 50 12 00

Louis XIV. An even tone of dark purple, with a broad margin of golden bronze; a very large flower of wonderful substance; green-black base starred yellow. A very scarce variety and one that instantly meets with favor when grown. Height 30 inches. 2 50 20 00

Dutch Breeder Tulips (May-Flowering), continued

Lucifer. Clear orange, with a rosy flush and olive base, with yellow star; very large flower on a tall stem. Height 24 inches.	Doz.	100	1,000	\$2 50	\$20 00
Madame Lethierry. Dark crushed strawberry edged and flushed salmon—a unique color; medium size, a very distinct form, and a variety of great beauty when grown in partial shade. Height 26 inches.	I 10	8 00	\$78 00		
Madras. Golden bronze, with dull heliotrope stripe on the outer petals, yellow base starred green. A long, good-sized flower. Height 26 inches.	I 00	7 00	68 00		
Marechal Victor. Pale lavender-violet, with broad edge of buff shaded bronze; inside violet, faintly flushed mahogany with beautiful green base—a wonderful color combination which we have seen in no other Tulip. A large flower of open graceful form. Height 28 in.	4 00	30 00			
Marie Louise. Old-rose, flushed orange-salmon, with purplish bloom and olive base. A very beautiful Tulip for border planting. Height 23 inches.	I 10	8 00	78 00		
Moody. Dull lilac-purple, with narrow edge of amber-brown, inside maroon-purple, with blue-purple midrib, and bright yellow base starred olive and white. Height 23 inches.	I 10	8 00	78 00		
Newton. Dark purple, with plum bloom on outer petals. A flower of the same tone as Darwin Jubilee, but not so large. One of the tallest Tulips. Height 35 inches.	9 00	70 00			
Old Times. Dull garnet, edged primrose-yellow, with greenish base; rather long flower of somewhat pointed form. A showy Breeder of English origin. Height 24 inches.	I 30	10 00	98 00		
Pink Pearl. A new Breeder and quite the finest of its color. The outside of the flower is a lilac-pink, inside rose, beautiful white base. A magnificent, large, egg-shaped flower. Height 26 inches.	4 50	35 00			

Plutarchus. Bronzy yellow, with a flush of heliotrope in the center of the petals; a flower of wonderful substance and splendid form. Height 26 inches.	Doz.	100	1,000	\$1 20	\$9 00	\$88 00
Prince of Orange. Dark terra-cotta brown, shaded yellow, with a yellow base starred black. Splendid for the border and good for forcing. Height 24 inches.	I 20	9 00	88 00			
Prince Albert. Golden brown, with purple flush through center of petals, which disappears as the flower ages. Height 32 inches.	I 20	9 00	88 00			
Prince of Wales. Warm maroon-brown; inside coppery brown, with black base, starred yellow. Long flower of flat, open form, fine for planting with paler bronze Breeders. Height 28 inches.	2 00	15 00				
Roi Soleil. This new Breeder Tulip is a combination of shades—rich dark violet, flamed with bronze. A magnificent, large flower borne on strong stems. Height 28 inches.	4 00	30 00				
Queen Alexandra. Canary-yellow, broadly flushed lilac-brown at the edges of the petals. A distinct variety for outdoors or forcing. Height 23 inches.	85	6 00	58 00			
Salomon. Silvery lilac, flushed buff when opening, inside slightly deeper tone, with large, white base; very long, loosely formed flower, carried on a graceful stem. Height 30 inches.	I 30	10 00				
Socrates. Deep rosy violet, with dull blue base; large flower of stately habit, often having an extra number of petals. Height 28 inches.	I 00	7 00	68 00			
St. James. Dark rosy lilac, edged bronzy tan, with coppery rose flush at tips of petals; inside ruddy mahogany, edged golden brown with yellow and green base. A large flower on tall stem. Height 28 inches.	3 00	20 00				
Turenne. Purplish brown, with a broad margin of soft yellow, very large flower and on account of its unique coloring very attractive for group planting. Height 28 inches.	I 20	9 00	88 00			
Velvet King. Deep, glossy purple-maroon, with a white base; a flower of gigantic size, lasting a long time in bloom. A magnificent Tulip for the border or shrubbery and forms an effective contrast when planted with the light-colored Tulips. Height 28 inches.	2 00	15 00				

Dutch Breeder Mixture.

A choice mixture of many varieties of this type of Tulip. Magnificent combinations of colors and shades from beautifully flushed white to deep wine-red, art bronze and darkest, maroon. 75c. per doz., \$5 per 100, \$45 per 1,000.

Plant
a
Few
Dutch
Breeder
Tulips
This
Year



Old English COTTAGE TULIPS, MAY-FLOWERING

The Cottage Tulips, like the Darwins, flower late. Many of the varieties are used extensively for late bedding and are magnificent for this purpose. The pale primrose, deep yellow, and splendid white varieties are often planted with the Darwins for effects of contrast. The following list we feel sure contains most of the best varieties. Certain varieties, like some of the Darwins, will flower a few days earlier than others, but on the whole the earliest is just at its best when the latest-flowering variety is just beginning to show bloom.

- Ambrosia.** This beautiful new variety of Cottage Tulip contains a combination of shades—bronze with rosy lilac glow; inside of the large, well-shaped flower is a salmon-orange tone. Height 22 inches. . . . \$2 50 \$20 00
- Avis Kennicott.** A rich, deep shade of yellow, with a striking black base and anthers. One of the best of the newer varieties. Height 25 in. . . . 1 20 9 00 \$88 00
- Daybreak.** Dull mauve, with a margin of creamy white and pale green base. A very beautiful variety. Height 17 inches. 1 20 9 00 88 00
- Dido.** A large, well-formed flower of rich orange-rose tone, with margin of bright orange-yellow, inside bright orange with yellow base. Height 24 inches. 15 00 100 00

- Fairy Queen.** Beautiful soft rosy lilac, outer petals broadly margined amber-yellow. A variety that should be included in every collection on account of its unique and lovely color. Height 20 inches. \$0 70 \$5 00 \$45 00
- Flava.** Canary-yellow, large, exquisitely formed flower with magnificent lasting qualities. Height 25 inches. 2 00 15 00
- Gesneriana ixioides.** Soft primrose-yellow, with black base; egg-shaped flower of medium size, attractive for the contrast between the base and the rest of the flower. Height 22 in. 1 00 7 00 68 00
- Gesneriana lutea.** One of the best of the well-known Gesneriana family. A bedder of unsurpassed qualities, with perfect-shaped flowers of purest golden yellow, on strong stems holding the flowers perfectly erect. Height 24 in. 75 5 00 48 00

- Gesneriana spatulata, or major.** The beautiful curved flowers are brilliant scarlet, with a bluish black center, on tall stems. Height 18 inches. 75 5 00 48 00
- Gold Dust.** Chrome-yellow, with faint edge of dull orange-red; large flower with slightly reflexing petals. A good yellow of this type, as the red edge does not suffuse the whole flower with age. Height 23 inches. 1 10 8 00 78 00
- Grenadier.** Brilliant orange-red. A new Tulip of great beauty. Flowers long, borne on very graceful stems. Height, 24 inches. 1 30 10 00
- Hammer Hales.** Golden brown, flushed old-rose inside bright apricot, edged bronze-yellow, with a yellow base. Height 24 inches. 2 00 15 00

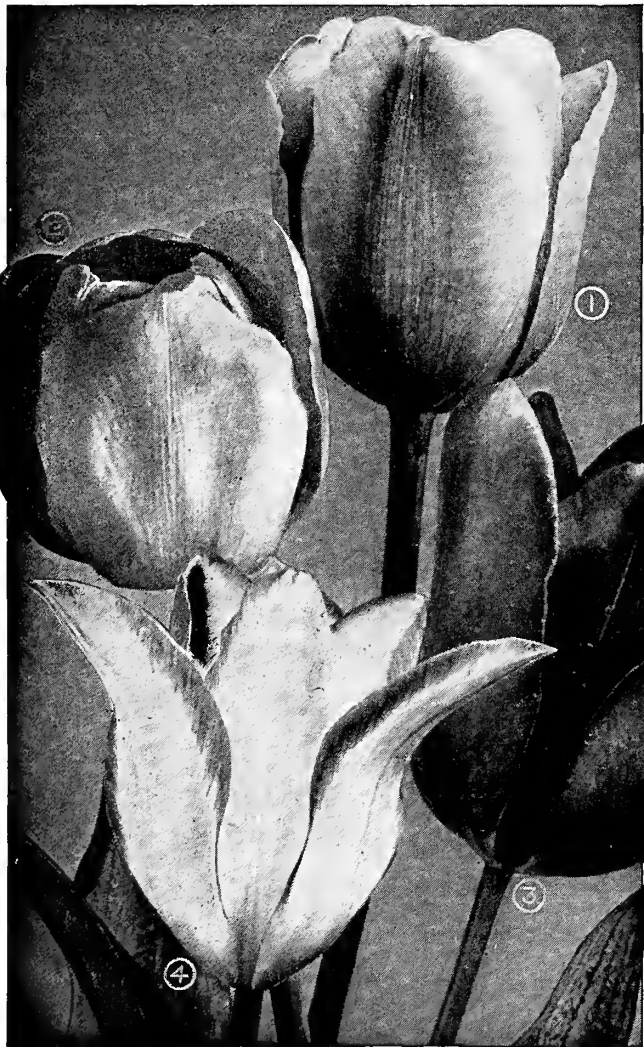
- Inglescombe Pink (Salmon Queen).** Beautiful soft rosy pink, slightly flushed salmon; large, globular flower of excellent form. Adapted for borders or late forcing. Height 22 inches. 70 5 00 48 00

- Inglescombe Scarlet.** A very charming variety of true Cottage type; intense scarlet. Should not be planted with Inglescombe Pink or Yellow, as they are fully 6 inches taller and resemble the Darwin type. Height 16 inches. 70 5 00 48 00

- Inglescombe Yellow.** A beautiful variety. Size, form and height greatly resemble the Darwins, so much so that it is frequently called the "Yellow Darwin," a fitting title. Height 22 inches. 70 5 00 48 00

- Innocence.** Pure white, with yellow base; a flower of fine form on a stiff stem. Excellent for border and a good variety for pots if forced gently. Height 20 inches. 2 50 20 00

- John Ruskin.** Salmon-rose, edged soft lemon-yellow, inside deep rosy lilac—a beautiful combination of colors; large flower of fine shape on a graceful stem. Height 16 inches 1 00 7 00 68 00



COTTAGE TULIPS—(1) Inglescombe Pink, (2) Inglescombe Yellow, (3) Gesneriana spatulata or major, (4) Picotee

Old English Cottage Tulips (May-Flowering), continued

	Doz.	100	1,000
Kingfisher. Creamy yellow ground, with age turning whiter, irregularly striped and feathered maroon and violet; blue-green base; large flower on sturdy stem. A most interesting variety, well named because of the combination of unusual colors. Height 18 inches.....	\$3	50	\$25 00
La Merveille. Very large, sweet-scented flowers. Salmon-rose, overlaid with orange-red. A grand border variety. Height 20 inches.....	70	5 00	\$48 00
Miss Willmott. A pale primrose-yellow of true Cottage form. In good demand on account of its delicate color. Height 18 inches.....	70	5 00	48 00
Moonlight. Bright canary-yellow; splendid, large flower, oval in shape, outer petals slightly reflexed at the tips. An excellent yellow for combination with the Darwin varieties. Height 22 in.	70	5 00	48 00
Mrs. Kerrell. Beautiful light rose with a delicate amber tinge, center white, bordered electric blue. A new variety of very refined coloring and shape and destined to win a place for itself among discriminating flower-lovers. Height 18 in..	2 00	15 00	
Mrs. Moon (Fulgens lutea maxima). Deep golden yellow, large flowers of good substance, slightly reflexing. Height 24 inches.....	1 00	7 00	68 00
Orange King. Beautiful deep orange, shaded rose, inside deep orange-scarlet with a yellow center. Height 23 inches.....	70	5 00	48 00
Picotee (Maiden's Blush). White, margined deep rose, the color suffusing the whole flower as it ages; medium-sized flower, reflexing. A grand Tulip for the border. The sight of a large bed planted wholly to this variety is one that will not easily be forgotten. Height 20 in..	70	5 00	48 00
Pluto. Self-colored rose-pink; good-sized flower of beautiful color and shape, with white base and blue star; best seen when planted by itself. Height 25 inches..	85	6 00	58 00
Pride of Inglescombe. White, broadly edged deep carmine-rose, white base starred blue. A long, and exquisitely-shaped Tulip somewhat like Picotee, but brighter in color. Very attractive planted in mass. Height 23 inches....	1 20	9 00	88 00
Quaintness. Old-gold, flushed deep rose; inside old-gold, shaded mahogany. Immense flower with very long petals. Height 24 inches.....	2 00	15 00	
Striped Beauty. Silvery rose, blotched and striped dark carmine and white; large, showy flower on a graceful stem. Height 18 inches.....	1 00	7 00	68 00
The Fawn. The coloring is a unique shade of pale rosy fawn, changing to blush-rose. Height 20 inches..	80	5 50	52 00
The Lizard. Deep blood-red, with purple bloom, striped and feathered yellow and white. A Tulip of most unusual markings. Height 24 inches.	85	6 00	58 00
Twilight. Dull violet-mauve, edged warm brown, irregularly striped and flamed dark violet; white base with blue halo, and striking white midrib; long, good-sized flower. Height 23 inches.....	2 00	15 00	
Union Jack. Light violet, feathered purple, with a few markings of white; blue base; large flower. A very striking variety. Height 20 inches.....	1 00	7 00	68 00
Vitellina. Pale yellow, becoming creamy white as the flower ages; large flower of great substance and beauty; sweet-scented. Excellent forcer.....	70	5 00	48 00
Walter T. Ware. Deep golden yellow, the deepest and richest color among Late Tulips; broad, globular flowers reflexing at the top. Height 18 inches.....	4 50	35 00	



A well-thought-out arrangement of Darwin and Breeder Tulips, with the Cottage Tulip Picotee in the foreground

Yellow Picotee. Beautiful canary-yellow, low, margined deep rose. A yellow counterpart to the well-known variety Picotee. A showy bedder. Height 20 inches.....\$0 85 \$6 00 \$58 00

Superb Mixture. A select assortment, covering almost every conceivable color and shade. Those who have not grown these Tulips, and desire a mixture for trial purposes, can depend on getting every color that obtains in this beautiful class of Tulips. 50 cts. per doz., \$4 per 100, \$35 per 1,000.

BOTANICAL TULIPS

CLUSIANA. The "Little Lady" Tulip. A lovely little variety which originated in Asia Minor. Grows about 8 inches high, flowers as large as a crocus. Outer petals cherry-red, inner petals white with violet base. Should be planted 8 to 9 inches deep in light soils in a sheltered place. Excellent bulb for the rock-garden. We have exhibited pots of this lovely Tulip at the New York Spring Flower Show every year for the past ten years and it is always greatly admired. Bulbs are grown for us by a specialist in the south of France and are excellent for pot-culture as well as for the rock-garden. For indoors plant same as recommended for other Tulips. **\$1 per doz., \$8 per 100, \$78 per 1,000.**

KAUFMANNIANA. One of the earliest of all the Tulips to come in flower. Creamy white, tinged rosy red, the markings varying. The flowers are very attractive, large in size, with petals reflexing. Blooms early in April. **\$1.30 per doz., \$10 per 100.**

MARJOLETTI. Splendid for rock-gardens in a sheltered place. May be forced in pots also. Blooms outdoors during late April. **\$1 per doz., \$7 per 100, \$68 per 1,000.**

Striped and Feathered May-Flowering Tulips



Rose Bybloem Tulip, Athalia

BYBLOEM AND BIZARRE TULIPS

Bybloem and Bizarre Tulips are "rectified" Breeder types. The Tulips are of an old race which has been grown in Holland and in France since the beginning of the seventeenth century, and which caused the famous Tulip craze in 1635. The Bybloems are queerly striped and feathered rose or violet on a white ground. The Bizarres have dark brown stripes and feathering on a yellow ground. The varieties offered are the newer sorts, and the flowers are larger than the older and smaller-flowering sorts. They flower about the same time as the Breeder and Darwin Tulips but do not grow quite so tall, and are seen at best advantage when planted in clumps in the herbaceous border or among evergreens and shrubs. The stems average from 18 to 23 inches in height.

- ADMIRAL KINGSBERGEN.** (Rose Bybloem.) Bright crimson, feathered and flamed with white; large flower, borne on a stiff stem. **\$1.50 per doz., \$14 per 100.**
- ATHALIA.** (Rose Bybloem.) White, bordered and feathered bright rose. **\$1.10 per doz., \$8 per 100.**
- BLACK BOY.** (Bizarre.) Yellow ground, feathered and flamed dark brown. **\$1 per doz., \$7 per 100.**
- EMPEROR DU MAROC.** (Bizarre.) Bright yellow ground, feathered and flamed dark red. **\$1.10 per doz., \$8 per 100.**
- GLORY OF HOLLAND.** (Violet Bybloem.) Pure white, feathered and flamed violet-purple. **\$1.50 per doz., \$12 per 100.**
- LADY STANLEY.** (Violet Bybloem.) White, feathered and striped dark violet. **\$1.10 per doz., \$8 per 100.**
- OVIDIUS.** (Bizarre.) Reddish brown ground, feathered yellow; very attractive variety. **\$1.10 per doz., \$8 per 100.**
- PRINS MAURITZ.** Yellow ground, variegated dark brown. **\$1.10 per doz., \$8 per 100.**
- REINE DE HOLLANDE.** (Rose Bybloem.) White, feathered and flamed red; a very attractive and distinctly variegated Tulip. **\$1.10 per doz., \$8 per 100.**
- ROMEA.** (Bizarre.) Bright yellow, feathered and bordered with orange-red; a very striking variety of large size. **\$1.10 per doz., \$8 per 100.**
- VONDEL.** (Violet Bybloem.) White ground, striped dark violet and feathered light violet. **\$2 per doz., \$15 per 100.**
- ROSE BYBLOEM TULIPS, MIXED.** 70 cts. per doz., \$5 per 100.
- VIOLET BYBLOEM TULIPS, MIXED.** 70 cts. per doz., \$5 per 100.
- BIZARRE TULIPS, MIXED.** An excellent mixture of choice named sorts. **70c. per doz., \$5 per 100.**

REMBRANDT TULIPS

Rembrandt Tulips are in reality "broken" forms of Darwin Tulips. Each year many of our best varieties of Darwin Tulips show a tendency to break, or become variegated. These Tulips, on account of their odd colorings and variegations, were very popular at one time, and while the modern tendency to favor self-colors is recognized generally throughout all countries, these broken forms are sometimes preferred and possess splendid decorative value. The stems average from 18 to 22 in. in height.

- APOLLO.** Lilac-rose and white, striped dark carmine. **\$1.10 per doz., \$8 per 100.**
- CARACALLA.** White, striped and feathered carmine-red; a very attractive variety. **\$1.10 per doz., \$8 per 100.**
- EROS.** Soft lilac, feathered dark violet; not a large but exquisite flower. **\$1.10 per doz., \$8 per 100.**
- JULIENNE.** Rose, striped and feathered carmine-purple and white. Edges of petals broadly blotched white makes splendid contrast with the rich color of the flower. **\$1.20 per doz., \$9 per 100.**
- LA COQUETTE.** Violet, flamed purple and white; not a large but an exquisite flower. **\$1.10 per doz., \$8 per 100.**
- MARCO SPADO.** White, flamed bright carmine-red; large flower. **\$1.30 per doz., \$10 per 100.**
- SEMELE.** White, heavily striped and feathered vivid rosy pink. A Tulip of exquisite coloring; large flower. **\$1 per doz., \$7 per 100.**
- VICTOR HUGO.** Brilliant carmine, feathered white; large flower. **\$1.10 per doz., \$8 per 100.**
- REMBRANDT TULIPS, CHOICE MIXED VARIETIES.** 70 cts. per doz., \$5 per 100.

PARROT TULIPS Three-Year-Old Flowering Bulbs

The petals of these Tulips have peculiarly feathered and fringed edges, and the shape of the flower, especially before it opens, resembles the neck of a parrot.

85 cts. per doz., \$6 per 100

- Amiral de Constantinople.** Large, red flowers, tipped with orange.
- Cramoisi Brillant.** Deep carmine; very handsome.
- Lutea major.** Large; bright yellow, with crimson and green stripes.
- Markgraaf von Baden.** Yellow, striped with scarlet and green.
- Perfecta.** Yellow and red, striped.
- Rubra major.** Blood-red; handsome.
- Mixed Parrot Tulips.** 70 cts. per doz., \$5 per 100.



Parrot Tulips



Double Tulips, Couronne d'Or

DOUBLE EARLY TULIPS

FLOWERS JUST AFTER EARLY TULIPS, IN LATE APRIL

Double Tulips are chiefly grown for their showy effects in masses, and are very lasting. Where a display of color is desired they are very satisfactory. Excellent for growing in pots or pans, but should not be forced into bloom very early.

The following list contains many of the best tested novelties, as well as all worth-while standard sorts.

Bleu Celeste. C 14. Soft violet-purple; large flowers of very pleasing color. A beautiful Tulip for cutting or late forcing. A variety much later than other Double Tulips.	Doz.	100	1,000
	\$0 85	\$6 00	\$58 00
Boule de Neige. B 10. Beautiful, large, full flower of glistening white; greatly resembling a peony in form. Excellent for bedding or forcing.		85	6 00 58 00
Couronne d'Or (Crown of Gold). B 10. Large, bold flower of rich golden yellow, shaded copper. Excellent for bedding and winter forcing.		85	6 00 58 00
El Toreador. B 12. Bright orange-scarlet, with a broad margin of buff-yellow. Excellent for pots or bedding.	I 20	9 00	88 00
Golden King. A 12. Soft canary-yellow shaded deeper yellow. Very fine for forcing or bedding.	I 20	9 00	88 00
Imperator Rubrorum. B 10. Excellent scarlet for bedding and forcing. Still remains among the best of the older varieties.	I 20	9 00	88 00
Lac Van Haarlem. C 13. Brilliant rosy violet; large; splendid form. Excellent for pots or bedding.	I 20	9 00	88 00
Murillo. C 12. Delicate rose-pink, flushed white. Fine for bedding, and excellent for forcing.	70	5 00	48 00
Peach Blossom. C 12. Bright rose-pink, flushed white, deepening with age to carmine-rose; large. A sport of Murillo. Excellent for pots.	I 30	10 00	
Rose d'Amour. B 12. Pale flesh-rose, deepening with age to soft salmon-rose; distinct shape and very lovely color. An especially beautiful Tulip for bedding or forcing.	I 00	7 00	68 00
Rubra Maxima. B 10. Rich deep brilliant scarlet, this is considered one of the finest varieties of this color for bedding.	85	6 00	58 00

Safrano (Brimstone; Tea Rose). B 12. Doz. 100 1,000 This variety is a sport of Murillo; flowers open pale yellow, flushed salmon, but develop a rosy apricot in a day or so.	\$1 00	\$7 00	\$68 00
Salvator Rosa. B 12. Beautiful deep rose, slightly flushed white. Excellent for beds or forcing.	85	6 00	58 00
Schoonoord. B 12. A beautiful, pure white sport of Murillo, with the same excellent forcing qualities. One of the best, if not the best white double.	85	6 00	58 00
Van der Hoef. C 12. A beautiful pure yellow sport of the variety Murillo. Fine new variety for forcing.	I 20	9 00	88 00
Vuurbaak. B 12. Brilliant scarlet, when fully open the flower gets an orange hue. One of the best scarlets for bedding owing to its sturdy stem.	I 20	9 00	88 00



Double Tulip, Murillo

S. & W. Co.'s Special Mixture. A mixture consisting of 15 named varieties, blended so as to give an assortment of all possible colors and shades, all of vigorous habit and large size, uniform height and time of blooming. 60 cts. per doz., \$4 per 100, \$38 per 1,000.

SINGLE EARLY TULIPS

FOR APRIL-BLOOMING OUTDOORS,
POTS AND FORCING

Few, if any, of the spring-blooming flowers rival the Tulip for brilliancy of bloom or ease of culture. For formal beds on the lawn or garden borders they are excellent subjects. They do not possess the same size of bloom and length of stem of the May-flowering Darwin, Breeder and Cottage varieties, but where early blooms are desired they are frequently used. Many of the varieties may be forced in bloom in January, while all the varieties may be easily had in flower in pots late in February or early March.

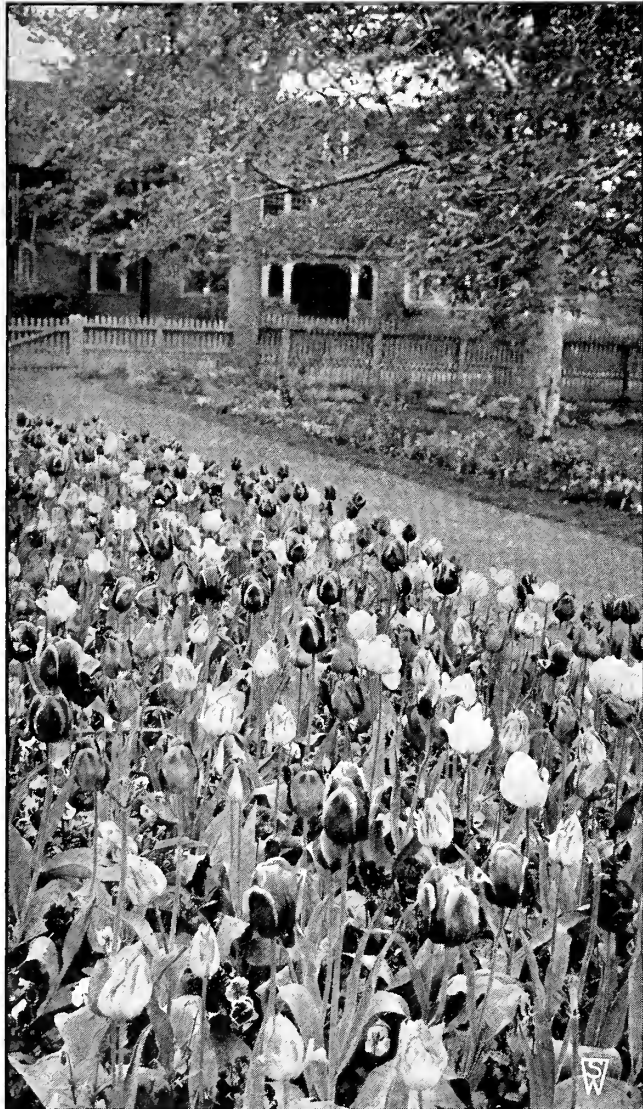
Culture.—For indoor blooming they require the same cultural treatment as Hyacinths.

Outdoor Culture.—Bulbs may be planted with good assurance of success even in early December, if the ground is open. They should be planted not more than 5 inches apart, covering the bulbs about 4 inches over the top. After the first sharp frost which forms a light crust on the surface of the soil, old leaves or litter should be spread about 6 inches thick over beds or borders to prevent frost from going deeper. Do not cover bulbs, if planted early, until the first sharp frost, as field-mice frequently nest among leaves and destroy bulbs, which is impossible if the covering is placed after the first hard frost.

Note.—The letters A, B and C, following the varieties indicate their relative earliness of bloom; but, with few exceptions, most of the varieties, however, bloom outdoors about the same time when planted in masses. The figures indicate the height in inches.

The following list contains the best novelties extant, as well as a complete list of the best standard varieties. We have discarded quite a number of varieties which no longer grow well.

BEST STANDARD AND NEW AND RARE VARIETIES



A border of Single Early Tulips

Augusta. B 10. An improvement on the old variety Rose Gris-de-Lin, but very much larger in size. A wonderful exhibition variety.....	Doz.	100	1,000	
		\$0 85	\$6 00	\$58 00
Belle Alliance. B 11. Brilliant scarlet, yellow base; large flower. An excellent variety for early forcing and does very well for bedding also...		85	6 00	58 00

Brilliant Star. A 12. Bright vermilion-scarlet, same color as Vermilion Brilliant, but larger and of great substance. Splendid early forer, flowering easily for Christmas.....	Doz.	100	1,000	
		\$1 20	\$9 00	\$88 00
Cerise Gris-de-Lin. C 11. Dark carmine-violet, shaded fawn and margined creamy white, with yellow base; large flowers of globular form. A novel bedding variety, but must be planted alone; excellent for March forcing..		85	6 00	58 00
Couleur Cardinal. C 12. A bright crimson-scarlet, with a deeper tone or bloom on the outer petals. A bed planted wholly to this variety is a grand sight. Grand for midseason forcing.	I 10	8 00	78 00	
Cramoisi Brillant. C 13. Glowing scarlet, with yellow base; long, narrow flowers of perfect form.	85	6 00	58 00	
Cramoisi Royal. B 14. A large flower of a bright carmine-rose, borne on strong stems. A lovely satiny rose color when grown in pots.....	I 20	9 00	88 00	
De Wet. B 16. Golden yellow, flushed deep orange; large, sweet-scented flower of erect habit. Quite different in color from any other variety.....	2 00	15 00		
Diana. B 14. Pure glistening white, with a yellow base; long flower of handsome shape. A fine new Tulip which grows more beautiful as it ages.....	70	5 00	48 00	
Enchantress. C 10. A very novel and attractive variety. Bright cherry-red with a broad border of creamy white; excellent for forcing or bedding.....	I 00	7 00	68 00	
Flamingo. B 12. Carmine-rose, shaded lighter. The petals are striped white and very crinkled, giving the flower a decidedly artistic appearance. A very popular variety among florists for forcing on account of its odd color and habit.....	I 10	8 00	78 00	
Fred Moore. B 12. An improved form of Thomas Moore. Deep, ruddy apricot, shading at the edges of the petals to dull orange-yellow, center marked olive-green; medium-sized flower; sweet-scented. A lovely color when forced.....	80	5 50	52 00	
Golden Queen. B 13. Golden yellow; large flower of extra-fine form. Excels all existing yellows for substance, and excellent for early forcing...	85	6 00	58 00	
Ibis. B 14. Quite the finest novelty offered by us this year. A brilliant dark pink color when grown indoors. A grand exhibition variety.....	I 20	9 00	88 00	
Keizerkroon. A 15. Bright crimson-scarlet, edged clear, rich yellow; excellent, large flower on long stem. Fine bedder; splendid for forcing.....	I 20	9 00	88 00	
King of the Yellows. A 14. Deep golden yellow; the flowers are egg-shaped, very substantial and carried on a tall stem, which makes them excellent for cutting. One of the earliest yellows which should be much more used for early forcing.....	85	6 00	58 00	

Single Early Tulips, continued

Lady Boreel (Joost Van Vondel White). B 13. Snowy white; large, long flower of splendid shape. The finest white for bedding, and superb for pots or pans. Cannot be forced so early as Pelican or White Hawk.....	Doz. 100	1,000	
	\$0 85	\$6 00	\$58 00
La Reine. B 12. White, flushed faintly with pink. Used largely by florists for early forcing and a very lovely variety.....	70	5 00	48 00
La Remarquable. C 13. Brilliant claret-purple, edged and tipped old-rose. A very large flower of elegant reflexing shape and a rather odd color among early Tulips. Good for bedding or late forcing.....	85	6 00	58 00
Le Reve (Hobbema; Sarah Bernhardt). C 14. This variety caused considerable favorable comment in our exhibit of bulbs at the New York Flower Show this spring. The color is old-rose, flushed buff; a very large, globular flower with rounded petals and carried on a strong stem. Excellent for late bedding, and retains color well if not forced before March.....	I 10	8 00	78 00
Max Havelaar. Very close in color to watermelon-red; rather large, well-formed flowers. A very striking variety.....	I 10	8 00	78 00
Mon Tresor. A 12. Golden yellow; the flowers are large and of a pure color. Mostly used for growing in pots or pans, for which purpose it is best.....	85	6 00	58 00
Moonbeam. B 14. Deep primrose-yellow, shading to soft canary at the edges; very large flower of graceful form. An improved form of Primrose Queen.....	I 30	10 00	
Pelican. A 14. A splendid new, pure white variety, and of wonderfully large size. Excellent for exhibition; sport of the variety White Hawk.....	I 00	7 00	68 00
Pink Beauty. C 12. Bright cherry-rose, center of petals striped white. It has no equal as a bedder, for the stem is strong and the white center of the big, fleshy petals shows up very conspicuously against the broad, vivid rose edges. Does well in pans, but not before March.....	I 20	9 00	88 00
President Lincoln. B 12. Large flower of clear magenta-violet, slightly paler in tone when grown indoors. A variety that looks well when bedded out with a pale yellow variety....	85	6 00	58 00
Prince of Austria. B 14. Brilliant orange-scarlet, with a clear yellow base. The flower is large and of a very attractive shade when forced. A splendid bedding variety as well..	I 00	7 00	68 00
Princess Juliana. B 12. A variety much on the order of Flamingo, but of a deeper shade of pink.....	I 50	10 00	
Princess Wilhelmina. B 13. Deep pink, with striking white flush on outer petals; long pointed flower. Fine for bedding.....	85	6 00	58 00
Proserpine. A 14. Rosy carmine, with a white center marked slate-blue; a very large globular flower. One of the easiest and earliest forcing Tulips; very sweetly scented. Good bedding variety also.....	I 20	9 00	88 00
Queen of the Netherlands. B 13. Beautiful pale rose flower of large size. One of the finest pale pink Tulips for bedding. Good for forcing, retaining its delicate color well if not forced too hard.....	70	5 00	48 00



Beds of Single Tulips

Rising Sun. B 15. A new variety used for exhibition on account of its pure yellow color, and wonderful size and substance. The finest golden yellow early Tulip introduced to date.....	Doz. 100	1,000	
	\$1 20	\$9 00	\$88 00
Rose Luisante. C 10. Brilliant, deep rose-pink; large flower. Splendid for bedding, or pots.....	I 10	8 00	78 00
Sir Thomas Lipton. B 12. Dark scarlet, with a yellow base, marked olive-green. A flower of good substance and large size. A sport of the once popular Pottebakker Scarlet....	I 00	7 00	68 00
The Pearl. Pale heliotrope, flushed white at base of petals—a color heretofore unknown in early Tulips....	2 00	15 00	
Van Der Neer. B 12. Deep dark purple; a flower of a most brilliant tone and splendid shape. A wonderful color out-of-doors.....	I 00	7 00	68 00
Vermilion Brilliant. A 12. Bright, glistening scarlet, with a yellow base; very large flower of perfect shape. Splendid for early forcing..	I 10	8 00	78 00
White Hawk. B 12. Lovely pure white, very large, globe-shaped, of great substance. A very early forcer....	85	6 00	58 00
Yellow Prince. B 12. Clear golden yellow. A large flower used by florists for early forcing or bedding....	70	5 00	48 00

S. & W. Co.'s Special Mixture. A mixture consisting of 25 named varieties, blended so as to give an assortment of all possible colors and shades, all of vigorous habit and large size, uniform height and time of blooming. 60 cts. per doz., \$4 per 100, \$38 per 1,000.

EXHIBITION HYACINTHS

Every year our growers prepare to select the finest grade of Hyacinths for us for exhibition. These bulbs are of maximum size, and fully aged for this purpose. The varieties listed below are grown especially for us, and intending exhibitors at the International Flower Show next spring will be interested in our selection of varieties which we believe, when grown for exhibition, should capture First Premiums. The Hyacinth enthusiast who is interested in novelty varieties will also find this list valuable.

We offer only the best sorts. There are several hundred varieties grown abroad, but we do not consider that there are over thirty of them worth growing. Bulbs such as we supply should be planted singly in a 5-inch pot, or four bulbs to an 8-inch bulb-pan. As there is a slight variation in the time of flowering between the different varieties, we have therefore indicated the relative time of blooming, 1 being early, 4 the latest.

ARENTE ARENSEN. 1. Snowy white; open, wide-petaled bells, and narrow, well-filled spike. A splendid exhibition variety.

CITY OF HAARLEM. 3. Soft Naples yellow, shaded deeper; large, well-formed truss and good stem. One of the best new yellows.

DR. LIEBER. 2. Pale lavender-blue, with a faint tinge of dark violet; large spike, well filled out. A handsome variety for bedding and a very early forcer.

ELECTRA. 2. Light silvery blue; an enormous spike; full and well finished, with large bells. A very lovely shade of blue in Hyacinths.

GENERAL DE WET. 2. Soft light pink; a fine spike with large bells. Pink sport of the well-known variety, Grand Maitre.

GERTRUDE. 1. Dark pink; strong, compact spike. A variety used largely by commercial florists on account of its earliness.

GRAND MAITRE. 2. Dark lavender-blue; large bells, and very long, well-filled truss, on an unusually strong stem.

KING OF THE BLUES. 4. Deep dark blue; splendid spike and bell. Excellent for late forcing.

LADY DERBY. 1. Clear rose-pink variety. A splendid forcing variety as the strong stems hold the truss well. Considered the finest rose-pink Hyacinth.

LA GRANDESSE. 3. Pure white flowers with waxy bells on long, full spike of perfect form.

LA VICTOIRE. 1. Bright, glistening carmine-rose; under glass this variety is a fine dark pink; well-filled spike on a strong stem.

L'INNOCENCE. 1. Pure white; fine truss of large bells, of great substance.

LORD BALFOUR. 1. Lilac-rose, tinged dark violet—a distinct color. The best Hyacinth of this color.

MENELIK. 2. Deep black-blue; large, well-formed truss with bells of good size, best of the so-called "blacks."

PERLE BRILLANTE. 2. Light blue, lavender; big bells on [a large, finely formed, stiff spike.

PRINCE HENRY. Clear Naples yellow. Long, narrow truss, with good bells and stem. A splendid new yellow variety.

QUEEN OF THE PINKS. 3. Very bright rose-pink, of unusually clear tone; large spike with large bells.

SCHOTEL. 1. Soft light blue; very long and perfect truss, with large bells, easily forced.

WHITE LADY. 2. A splendid new white variety, with a strong, compact spike and large pure white bells.

YELLOW HAMMER. 1. Creamy yellow, compact spike and large bells.



These large spikes of Dutch Hyacinths were produced from our Exhibition Grade

Special Offer. We place large contracts for the above varieties and thus secure the pick of the crop. This enables us to offer at a uniform price of 35 cts. each, \$3.50 per doz., \$25 per 100.



MATCHLESS BEDDING HYACINTHS

Special named varieties in distinct shades of color, to flower at the same time

BULBS MEASURE 7 TO 8 INCHES IN CIRCUMFERENCE

The Hyacinth chosen to represent each of the following shades of color is a variety which, we have found from trials, will be best in the three essential requirements: Best in its color; stoutest stem; largest truss of bells; so our customers will know that we have avoided using such varieties that are of weak stem, and that do not support the blooms.

SPECIAL NOTICE: *Owing to the unprecedented demand in Holland from such countries as Sweden, Norway, Denmark, and Germany, for Hyacinth Bulbs, the supply is less than the demand. This has resulted in greatly increased prices. During the war, Hyacinth culture in Holland was greatly reduced, owing to the lack of European demand. These new markets have now opened, with the result that Hyacinths are now at a premium. Rather than contract for inferior sizes, we were obliged to raise our prices.*

CULTURE

These Hyacinths should be planted from 6 to 10 inches apart, and covered with at least 4 inches of soil from the top of the bulb. For beds or borders close to the conservatory or dwelling, 6 inches will make a fine display; but where the beds are planted to be viewed from a distance, they may be planted 10 inches apart. Hyacinths planted alternately with narcissi produce a most graceful effect, and for this combination 6 inches from bulb to bulb is also a very suitable distance. It is advisable to cover, after the bulbs have been planted, with leaves or some heavy material that will prevent them from freezing or being affected by early spring frosts after they have started.

Hyacinths, as well as narcissi, should be planted by November first in this latitude, as they are the better for early planting. Tulips may be planted up to December first, weather permitting.

Delivered (by Express or Parcel Post) anywhere in the United States

	Doz.	100	1,000
Matchless Bedding Scarlet	\$2 00	\$15 00	\$140 00
Matchless Bedding Pink	2 00	15 00	140 00
Matchless Bedding Light Blue	2 00	15 00	140 00
Matchless Bedding Dark Blue	2 00	15 00	140 00
Matchless Bedding Pure White	2 00	15 00	140 00
Matchless Bedding Mauve	2 00	15 00	140 00
Matchless Bedding Deep Yellow	2 00	15 00	140 00

Suggestions for Effective Color Combinations

1. Matchless Bedding Pink and Light Blue.
2. Matchless Bedding Light Blue and Deep Yellow.
3. Matchless Bedding Light Blue and Dark Blue.
4. Matchless Bedding Dark Blue and Deep Yellow.

Miniature Hyacinths

(DUTCH ROMANS)

The following method of growing Hyacinths for winter-flowering in the house has given the most satisfactory results. A number of florists use it for creating something new in the line of an Easter display, with the result that there is always a much greater demand than supply, owing to the beautiful display the Hyacinths in pans make. The secret of acquiring success is simply the following: Plant only one kind in a pan, in order to have them all bloom at once, and to have them all the same shade. The following varieties are the best sorts. By planting 8 or 10 bulbs of any one variety mentioned, in a pan 7 or 8 inches in diameter, and following the directions for planting in pots, the most satisfactory results will be obtained. In ordering bulbs for this purpose, be sure to mention Miniature Hyacinths. On account of the unprecedented rise in the price of all Dutch Hyacinths in Holland, we have decided to list a lesser number of varieties. We offer four of the most distinct sorts, which we know will give excellent satisfaction.

FOUR FINE VARIETIES

- City of Haarlem.** Best Naples yellow.
- Gertrude.** Beautiful dark pink.
- Grand Maitre.** Dark lavender-blue.
- La Grandesse.** Pure white.

Price of any of above named varieties, \$1 per doz., \$8 per 100, \$75 per 1,000.



Miniature Hyacinths

French Roman Hyacinths

French Roman Hyacinths are among the earliest bulbs to be had in flower. The bulbs arrive from France late in August, and, like all bulbs grown in the south of France, they may be had in flower from November all through the winter months, if potted up in September and at intervals of every two weeks. They are much prized for pots or cutting on account of their graceful appearance and delicate fragrance. The bulbs are about the same size as the Miniature Dutch Hyacinths offered on this page, and may be planted six or seven to a 5- or 6-inch pot, or ten to twelve bulbs to an 8- or 9-inch bulb-pan. The flowers are smaller than those of the Dutch Hyacinth, and are borne in great profusion, the larger bulbs frequently having three to five graceful spikes of bloom. Their ease of culture and earliness of bloom suggest their use. The white variety is the most reliable. They are not hardy in our northern climate, and should not be planted outdoors. The general culture given for Hyacinths on page 16 is suggested.

	Doz.	100	1,000
White. Mammoth bulbs, 12 to 15 cts.	\$1 50	\$12 00	\$110 00
Jumbo bulbs, 13 to 15 cts.	2 00	14 00	130 00
Single Rose. First-size bulbs	1 30	10 00	95 00
Single Blue. First-size bulbs	1 30	10 00	95 00



French Roman Hyacinths

Our patrons desiring Hyacinths for culture in glasses are advised to select varieties from page 16. We offer Hyacinth Glasses, both Belgian and Tye shape, at 45 cts. each, \$4.50 per doz.

Polyanthus Narcissi

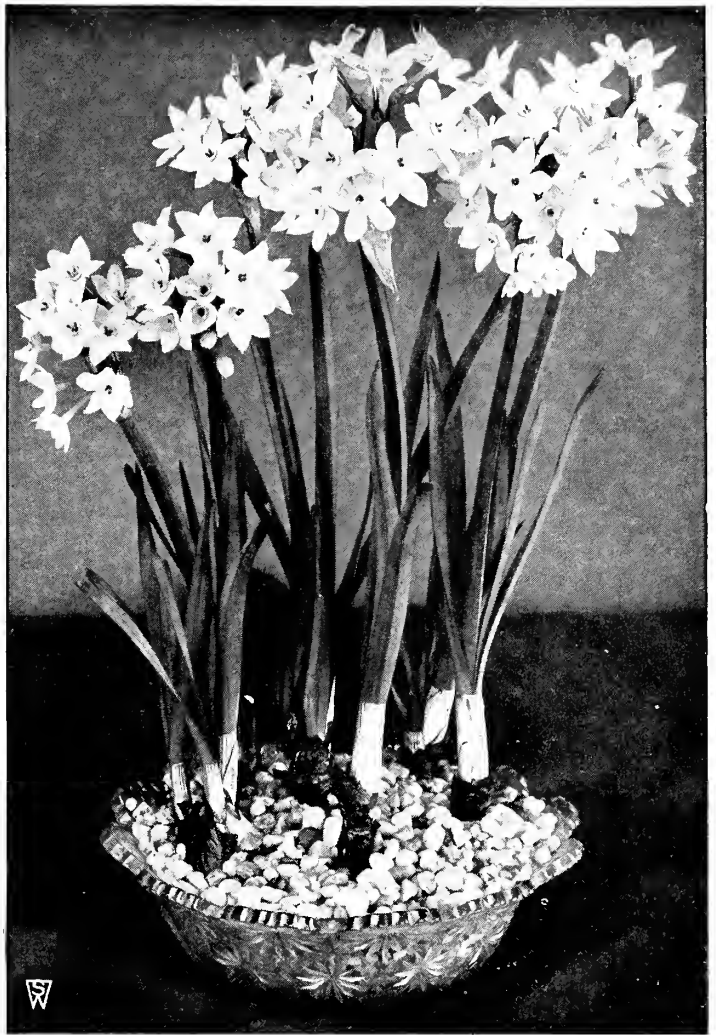
VARIETIES FOR EARLY FORCING

Not for Outdoor Planting, except south of the Carolinas

We have decided to discard all the varieties of these Narcissi that are usually grown in Holland and would recommend our patrons to make selections from the Poetaz type listed on page 23 of this catalogue. The varieties **Paper-White Grandiflora**, **Grand Soleil d'Or**, and **Gloriosa** we list below. These are grown for us in the south of France. They arrive in this country in August and are used principally by the florists for forcing. As these varieties are matured earlier in the south of France than in Holland, they may be brought in flower in the house or greenhouse in December or January, if potted up in September.

Gloriosa. A new variety similar in character to Grand Soleil d'Or, but with white flower and yellow cups. Very good for early forcing. **\$1.75 per doz., \$12 per 100, \$100 per 1,000.**

Grand Soleil d'Or. A popular yellow bunch-flowering variety of the Polyanthus type. Flowers a clear, sunny yellow, with bright orange cups. Excellent for early flowering indoors. **\$1.75 per doz., \$12 per 100, \$100 per 1,000.**



Paper-White Grandiflora Narcissi growing among pebbles in water

Suitable for Growing in Water Giant Paper-White Grandiflora

This large-flowering Paper-White Narcissus is such an improvement over the ordinary Paper-White that we have decided to discontinue the sale of the latter. It can be had in bloom from Christmas to Easter. Plant bulbs in shallow boxes or pots so that they almost touch each other, and store in a cool cellar or shed until rooted. By bringing into the light during early November they may be had in bloom for Christmas. Excellent results can be obtained by growing in bowls of water and pebbles or moss, the same as the Chinese Sacred Lily.

	Doz.	100	1,000
Jumbo bulbs	\$0 75	\$6 00	\$50 00
First Size	50	4 00	35 00

GLASS BOWLS. For three bulbs of Paper-White Grandiflora Narcissi or Double Roman Narcissi. **35 cts. each, \$3.50 per doz. For 6 bulbs, 50 cts. each, \$5. per doz.**

PEBBLES. Carefully screened and selected. **Quart box 20 cts., 2 qts. for 35 cts.**



Double Narcissus, Von Sion

Double Narcissi (Daffodils)

The Double-flowering Daffodils offered in our list may be planted outdoors, but are admirably adapted for indoor growing in pots and pans, or may be forced in flats for cutting purposes. We have listed, for the first time this year, three of the newer varieties of Double Daffodils, which are splendid for pot-culture but are excellent for outdoor planting as well.

Argent. C. This variety is best described as a Doz. 100 1,000
Double Incomparabilis. Very pale primrose perianth with a double row of petals; chrome-yellow cup. A fine new Double Daffodil with a strong stem. Height 14 inches..... \$1 50 \$10 00 \$95 00

Dubloon. B. Similar in type to the variety Argent, except in color which is a deep yellow, center shaded orange; very beautiful flowers; bold stiff stems. Height 13 inches..... 1 00 7 00 65 00

Primrose Phoenix. B. A very lovely variety of the same type as the two varieties described above. The beautiful rose-shaped flowers are an even tone of soft lemon-yellow. A splendid acquisition to the Double Daffodil family..... 3 00 20 00

Von Sion. B. This, the most popular of the Double Narcissi, is famous as the Old Double Yellow Daffodil. Rich golden yellow perianth and trumpet. This is one of the best winter-flowering forcing sorts. Height 18 inches.

Jumbo Exhibition Grade	1 00	7 00	65 00
First-Size Single-Nose	70	5 00	45 00

NARCISSI or DAFFODILS

No garden would be complete without the Narcissus or Daffodil. The innumerable positions in the garden in which their use may be availed of is responsible for their popularity. It is not only for garden culture that they are largely used, but many of the varieties are extensively grown in pots or pans for indoor decoration during late winter months. Some varieties in our list may be forced into bloom as early as January. Their simple beauty of form, dignity of habit, elegance of bloom and ease of culture, account for the new interest amounting to enthusiasm of flower-lovers all over Europe. Each year we are greeted with a profusion of novelties, many of which, on account of the high prices, are not available for immediate use.

All the varieties of Narcissi or Daffodils offered in our catalogue, with the exception of the Polyanthus Narcissus and such other few sorts as are especially noted, are perfectly hardy, and will continue to flower outdoors each year if given a congenial location and not disturbed. Where they are used for bedding, and must be lifted, it is wise to permit bulbs to remain after flowering until the foliage turns brown down to the ground, then lifted, and the earth shaken from the bulbs; they should be stored in a cool, dry place. Narcissi, like hyacinths, should be planted by early November, and should not be allowed to remain out of the ground so long as tulips, which may be planted up to hard frost.

CULTURE.—Owing to the various sizes of the bulbs, it is not advisable to state the exact depth to plant, but the simple rule of covering the bulb one and a half times its own depth, and making the distance between the bulbs 3 to 4 inches for the smaller sorts and 5 to 6 inches for the larger ones, is a good one. For greenhouse or window-garden culture treat them the same as hyacinths, except that three or more bulbs of one variety should be planted in a pot, and not single specimens.

Where a succession of blooms is desired for outdoors as well as indoors, we have arranged the following code: A, first early; B, second early; C, midseason; D, late; E, very late.

NOTE.—In describing Daffodils, Narcissi, etc., we have referred to the "perianth" and "trumpet," "crown" or "cup." The "perianth" is the surrounding row of petals or wings, and the other terms apply to the central funnel-like tube.

Giant Trumpet Varieties, Including New and Rare Sorts

The flowers of the Giant Trumpet varieties are of large size; the "perianth," or wing-like petals, according to the variety, measure from 2 to 4 inches across, and the "trumpets," or central funnel-like tubes, vary from 3 to 4 inches in length. Flowers are borne on strong, stiff stems, from 12 to 18 inches high.

Albicans. Discarded. Mme. de Graaff recommended instead.

Alice Knights. White perianth with gracefully twisted petals; creamy white trumpet, slightly recurving and elegant form. Quite the earliest-flowering White Trumpet for outdoors or pots. **30 cts. each, \$3 per doz., \$20 per 100.**

Duke of Bedford. B. White perianth, with loose, spreading petals and long, deep yellow trumpet well frilled at the mouth. The marked contrast in color between the deep trumpet and the glistening white perianth is very effective. A splendid exhibition sort. Height 16 inches. **35 cts. each, \$3.50 per doz., \$25 per 100.**

Emperor. C. Perianth deep primrose-yellow, trumpet rich yellow; a very large flower. Excellent for naturalizing or forcing. Height 18 inches.

Jumbo bulbs	Doz.	100	1,000
	\$1 50	\$9 00	\$85 00
First-size, round bulbs	1 00	7 00	65 00

Emperor. (French-grown.) A strain of the above described variety grown in the south of France and used here for early forcing. **\$1.50 per doz., \$9 per 100, \$85 per 1,000.**

Empress. C. White perianth of great substance; trumpet rich chrome-yellow. Showy for border or naturalizing. Does equally well forced. Height 18 inches.

Jumbo bulbs	Doz.	100	1,000
	\$1 50	\$9 00	\$85 00
First-size, round bulbs	1 00	7 00	65 00

Glory of Leyden. C. Perianth pale yellow, broad and spreading, very long trumpet of golden yellow; enormous flower of great vigor and substance. An especially fine variety for borders and excellent for pot culture. Should not be forced hard. Must be planted early. Height 15 inches. **15 cts. each, \$1.50 per doz., \$10 per 100.**

Glory of Noordwijk. B. One of the best and most attractive of the Bicolors; perianth sulphur-white, trumpet chrome-yellow, very long and elegantly reflexed at the brim; of good size and substance. Grand for pots or cutting. Height 14 inches. **15 cts. each, \$1.50 per doz., \$10 per 100.**

Golden Spur. A. A very good variety, both perianth and trumpet being of a rich yellow color; foliage very broad and striking. It is of unusually robust habit and unsurpassed for garden, pots, or forcing. Early and extremely free flowering. Height 18 inches.

Jumbo bulbs	Doz.	100	1,000
	\$1 50	\$9 00	\$85 00
First-size, round bulbs	1 00	7 00	65 00



Giant Trumpet Narcissi

1. Van Waveren's Giant. 3. Glory of Noordwijk.
2. King Alfred. 4. Spring Glory.

Giant Trumpet Narcissi, continued

Grace Darling. Discarded. Mme. de Graaff recommended instead.

Henry Irving. Discarded. Emperor recommended instead.

Horsfieldii. Discarded. Victoria recommended instead.

King Alfred. C. A king among the new varieties, one that responds splendidly to forcing and one that you should grow a few of. For pans or pots for exhibition, its size, general vigor, and depth of color put it in a distinct class of the **Finest Giant Golden Yellow Narcissi**. Wherever this Narcissus has been exhibited it has caused a sensation. Perianth often measures 4 inches across, trumpet fully 2 inches.

	Each	Doz.	100
Jumbo Bulbs	\$0 35	\$3 50	\$25 00
First-Size Round Bulbs	30	3 00	20 00

Lord Roberts. Yellow Trumpet. Perianth of remarkable substance, something like two triangles of petals superimposed; long, sturdy trumpet, wholly in keeping with the noble character of the flower. A self-toned, deep, golden yellow. A free bloomer and tall grower of enormous size and color. Height 23 inches. **\$1 each, \$10 per doz., \$75 per 100.**

Loveliness. B. White Trumpet. Broad, smooth perianth of snowy whiteness, bold substance; very elegant white trumpet expanded at the mouth. A very graceful and refined flower. Considered the best white trumpet Daffodil. Height 14 inches. **\$1 each, \$10 per doz., \$75 per 100.**

Mme. de Graaff. C. Pure white perianth, trumpet primrose, passing into white, well formed at the brim. A good white for exhibition, or growing in pots or pans for decoration. Bulbs should be removed from containers immediately upon receipt and planted; if permitted to remain will quickly decay. Height 15 inches. **15 cts. each, \$1.50 per doz., \$10 per 100.**

Olympia. B. Perianth light chrome-yellow, trumpet deep chrome-yellow; of huge dimensions. Splendid exhibition sort; a variety in the same class as King Alfred; of wonderful constitution and size. Height 15 inches. **35c. each, \$3.50 per doz., \$25 per 100.**

Peter Barr. White Trumpet. White perianth of rather loose and spreading form; huge trumpet of pale ivory-white, very long and beautifully recurving at brim. A flower of exquisite symmetry, fine substance, and very noble character, the largest White Trumpet in our list. Strong grower and free bloomer. Height 15 inches. **\$1 each, \$10 per doz., \$75 per 100.**

Spring Glory. Clear white perianth with long petals of splendid form, long trumpet of deep yellow, well reflexing at the brim. A very vigorous grower and one of the best of the newer Daffodils for pot culture. **20 cts. each, \$2 per doz., \$15 per 100.**

Treserve. B. Yellow Trumpet. Perianth primrose-yellow, slightly hooded; very large trumpet of rich canary-yellow, broad at the mouth and deeply flanged. Height 17 inches. **40 cts. each, \$4 per doz., \$30 per 100.**

Vanilla. C. This is a grand, tall-growing and very handsome variety, having a fine, bold trumpet of deep yellow, with a paler perianth, and possessing the added charm of a most pleasing and delicate odor. It flowers the same time as Emperor, and is a good variety for forcing. Height 20 inches. **15 cts. each, \$1.50 per doz., \$10 per 100.**

Van Waveren's Giant. B. Bicolor Trumpet. Broad perianth of campanulate form, bright yellow trumpet with very large, open mouth flanged at brim. Huge flower of vigorous habit and very showy character. Height 17 inches. **35 cts. each, \$3.50 per doz., \$25 per 100.**

Weardale Perfection. Perianth milk-white with broad, overlapping petals; long trumpet of primrose-yellow; elegantly fluted at the mouth. A good grower and free bloomer. **35 cts. each, \$3.50 per doz., \$25 per 100.**

Giant Trumpets in Mixture. For naturalizing. Each year we import large quantities of these bulbs for naturalizing, and frequently, at the end of the season, prepare a mixture of some of the best varieties which we have in surplus for this purpose, which we offer at the very low price of \$5 per 100, \$45 per 1,000.

VICTORIA B

A Bicolor famous for its large and durable flowers which stand boldly erect; broad perianth of creamy white; large, broad, fluted trumpet of rich yellow. A strong grower, with massive flowers. Fine for forcing, the flowers lasting in excellent condition long after being cut. Height 16 inches.

	Doz.	100	1,000
Jumbo bulbs	\$1 50	\$9 00	\$85 00
First-size, round bulbs	1 00	7 00	65 00



Giant and Medium Trumpet Narcissi

1. *Sir Watkin (Medium)*.
2. *Empress (Giant)*.
3. *Victoria (Giant)*.
4. *Conspicuous (Medium)*.

Medium Trumpet Narcissi, or Daffodils

This is also a very popular type or rather types of the Narcissus or Daffodil family. Splendid for garden culture, in pots or pans, or in flats, for cut-flowers.

The following varieties are grouped in some catalogues under the headings, Barrii, Incomparabilis and Leedsii types.

NOTE.—“*Perianth*” is surrounding row of petals, or wings; “*crown*” or “*cup*” is the central cup or funnel-like tube.

BARRII. Daffodils belonging to this group are crosses between Yellow Giant Trumpets and the Poet’s Narcissi. The crown usually is not over one-third the length of the perianth petals.

INCOMPARABILIS. The Incomparabilis varieties are also crosses between the Yellow Giant Trumpets and the Poet’s Narcissi, but the crowns are larger than those of the Barrii group, sometimes being three-fourths of the length of the perianth petals. The color of the perianth is either yellow or white.

LEEDSII. These are crosses between White Giant Trumpets and the Poet’s Narcissi. The crowns are as large as those of the Barrii and Incomparabilis groups, but the perianth petals are always white, and the crowns are mostly white or light yellow.

Autocrat. (Incomparabilis.) C. Clear golden yellow; broad perianth tending to reflex, cup widely expanded at the mouth. A very handsome variety for the border or pots. Height 20 inches. 15 cts. each, \$1.25 per doz., \$8 per 100, \$75 per 1,000.

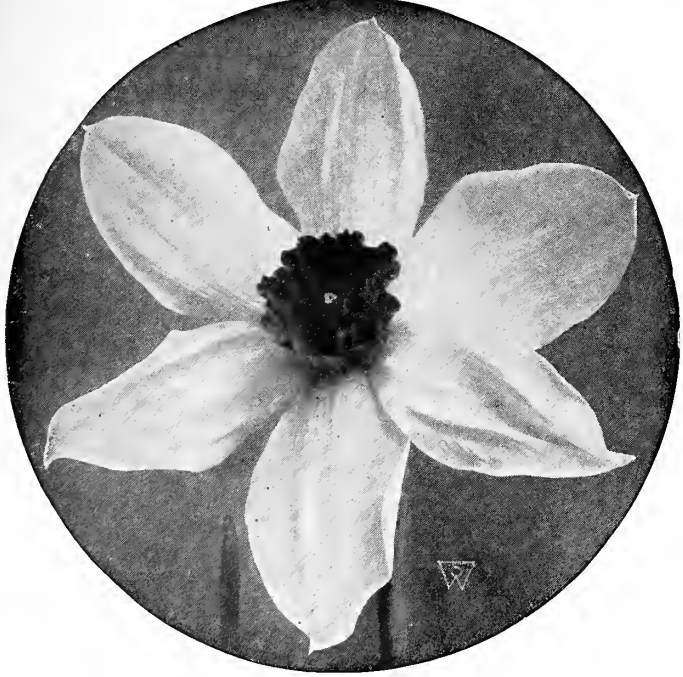
Bernardino. (Incomparabilis.) Very large, creamy white perianth of great substance; large cup of pale lemon-yellow, flushed and edged pinkish apricot, and very heavily frilled. Height 20 inches. 50 cts. each, \$5 per doz.

Conspicuous. (Barrii.) C. Large, broad-spreading perianth of pale yellow, short darker yellow cup, brightly edged orange-scarlet. Splendid for midseason forcing, and good for any position in the garden. Height 21 inches. 10 cts. each, 90 cts. per doz., \$6 per 100, \$55 per 1,000.

Duchess of Westminster. (Leedsii.) C. Pure white perianth; cup pale canary-yellow, slightly darker at the edge, passing into ivory-white; large star-like flower of exquisite beauty. One of the best of the Leedsii for exhibition. Height 16 inches. 15 cts. each, \$1.25 per doz., \$8 per 100, \$75 per 1,000.

Frank Miles. (Incomparabilis.) C. Perianth pale yellow, elegantly twisted; cup bright yellow; large flowers. Effective planted in clumps in the border; also grown extensively for cutting; very good for pot culture. Height 21 inches. 10 cts. each, \$1 per doz., \$7 per 100, \$65 per 1,000.

Great Warley. (Incomparabilis.) Broad, massive perianth of creamy white, fully 5 inches across when well grown; rich golden yellow crown, 1 1/2 inches wide. A very striking and beautiful flower. Height 18 inches. \$1 each, \$10 per doz.



Medium Trumpet Narcissus, Lucifer

Lady Godiva. (Barrii.) C. Large, spreading perianth of pure white, cup large, pale yellow, edged orange-scarlet. A splendid variety in every way; excellent if planted out in combination with the variety Conspicuous. Height 18 inches. 15 cts. each, \$1.25 per doz., \$9 per 100, \$85 per 1,000.

Lady Moore. (Barrii.) C. A stately flower with a creamy white perianth, and a large, dark yellow cup, edged orange-scarlet. A variety that is very striking in appearance and sure to be appreciated by discriminating Daffodil lovers. 50 cts. each, \$5 per doz., \$35 per 100.

Lord Kitchener. (Leedsii.) Large, snowy white perianth, broad and flat, of great substance; big crown of the palest primrose, widely open at mouth and elegantly crimped and fluted at the brim. A flower of perfect quality, one of the most desirable in its class. Height 21 inches. 35 cts. each, \$3.50 per doz., \$25 per 100.

Lucifer. (Incomparabilis.) C. Perianth sulphur-white, with long, well-rounded petals; cup chrome-yellow, with intense orange-scarlet suffusions. A bold, showy flower for outdoors, holding its color well, and splendid for exhibition. Height 18 inches. 15 cts. each, \$1.25 per doz., \$8 per 100, \$75 per 1,000.

Masterpiece. (Barrii.) Perianth sulphur-white with broad, very round petals of great substance and Poeticus character, eye orange-scarlet, quite flat and beautifully crinkled, the color covering the entire surface of the inch-wide eye. Height 22 inches. 40 cts. each, \$4 per doz., \$30 per 100.

Mrs. Langtry. (Leedsii.) D. A remarkably free-flowering variety, each bulb usually producing several flowers; broad white perianth, white cup opening pale primrose. On account of its low price it is largely used for naturalizing. It is good, also, for potting. Height 16 inches. 10 cts. each, 90 cts. per doz., \$6 per 100, \$55 per 1,000.

Queen of the North. (Leedsii.) C. Broad, large perianth of clear, glistening white and remarkable texture; cup soft primrose-yellow, with narrow rim of sulphur-white. A splendid Leedsii variety for either indoor or outdoor culture. Height 18 inches. 15 cts. each, \$1.50 per doz., \$9 per 100, \$85 per 1,000.

Red Beacon. (Barrii.) Broad white perianth of splendid substance, with broad well-frilled cup of dazzling orange-scarlet. A very striking variety on account of its brilliant coloring. 35 cts. each, \$3.50 per doz., \$25 per 100.

Sir Watkin. (Incomparabilis.) C. Perianth primrose-yellow; large and well-formed yellow cup, tinted deep yellow. A giant among the Medium Trumpet sorts. A grand flower of wonderful substance for garden culture or pots, this variety frequently has flowers 5 inches across, and its splendid proportion and ease of culture cause it to be one of the most popular of the older varieties. Height 18 in.

	Doz.	100	1,000
Mother bulbs.....	\$1 50	\$9 00	\$85 00
First-size, round bulbs.....	1 00	7 00	65 00

White Lady. (Leedsii.) C. Broad, white perianth of perfect form; small cup of pale canary, beautifully crinkled. A new sort that is conceded to be one of the best. Fine for outdoor planting, making a splendid cut-flower; good for pot culture also. Height 20 inches. 15 cts. each, \$1.25 per doz., \$8 per 100, \$75 per 1,000.

Will Scarlett. (Incomparabilis.) Creamy white perianth; cup widely expanded and of a brilliant orange-scarlet, elegantly frilled. 30 cts. each, \$3 per doz., \$20 per 100.

Medium Trumpets in Mixture. For naturalizing. Our mixture of the Medium Trumpets for natural plantations contains a great many varieties which we do not list under separate headings and are excellent for this purpose. \$5 per 100, \$45 per 1,000.



Narcissus Poetaz, Aspasia

Narcissus Poetaz

THE HARDY CLUSTER-FLOWERED POET'S NARCISSUS

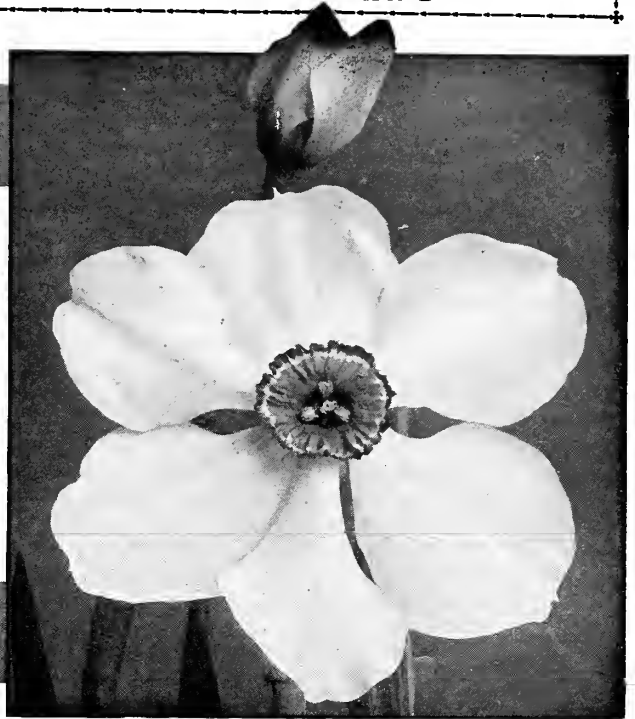
The chief characteristics of this type of Narcissus is that hybridizers by crossing the strong-scented Polyanthus varieties with the Poeticus type, developed a hardy strain of Daffodils which has the bunch-flowered character of the Polyanthus with larger flowers similar to the Poet's described on this page. They are excellent for pot culture or are splendid for the garden border.

ASPASIA. C. Perianth pure white, with soft yellow eye; three or four flowers on a stem. One of the best of this class and especially bright in color. Height 18 inches. 15 cts. each, \$1.25 per doz., \$8 per 100, \$75 per 1,000.

IDEAL. C. Perianth pure white, with a dark orange eye; three or four flowers on a stem. A very easy variety to get in flower in pots and very charming on account of the size of the flowers and striking contrast of the dark orange eye. Height 18 inches. 15 cts. each, \$1.25 per doz., \$8 per 100, \$75 per 1,000.

KLONDYKE. Perianth an even tone of pure bright yellow, with golden yellow eye. A variety of wonderful vigor and size giving five to six flowers on a stem. Height 15 inches. 15 cts. each, \$1.50 per doz., \$10 per 100, \$95 per 1,000.

LAURENS KOSTER. Perianth pure white, with soft yellow eye. A variety that is much admired on account of the large size of the flowers. It is a strong grower, frequently having five flowers on a stem. Height 18 inches. 15 cts. each, \$1.25 per doz., \$8 per 100, \$75 per 1,000.



Narcissus Poeticus, King Edward VII

The Poet's Narcissi

Narcissus poeticus

This class of Narcissus, instead of having a trumpet or crown, has a small, wide-mouthed cup. They are very hardy, and are used in large numbers for naturalizing, their simplicity of form and delightful fragrance making them highly prized. Cassandra, Epic, King Edward VII, and Ornatus are used with excellent success for growing indoors in pots or pans, or gently forced into bloom for cutting purposes.

POETICUS (Pheasant's Eye). D. The original late-flowering Pheasant's Eye variety so popular for gardens and naturalizing; pure white flowers with orange cup, edged with red. Height 15 inches. 10 cts. each, 75 cts. per doz., \$4.50 per 100, \$40 per 1,000.

POETICUS ORNATUS (Improved Poeticus). C. Grand flower for cutting. Larger and more symmetrical than the old variety and considerably earlier. Pure white flowers, saffron cup, tinged rose scarlet. Magnificent cut-flower. Height 15 inches. 10 cts. each, 85 cts. per doz., \$6 per 100, \$55 per 1,000.

POETICUS, KING EDWARD VII. C. Round, white perianth, cup light yellow, margined deep red. A vigorous grower, excellent for pot culture. Height 15 inches. 15 cts. each, \$1 per doz., \$8 per 100, \$75 per 1,000.

POETICUS, EPIC. C. Quite the best and largest of the new Poet's varieties. The white perianth is of large size, cup canary-yellow, rimmed bright red. Height 17 inches. 20 cts. each, \$1.75 per doz., \$12 per 100, \$110 per 1,000.

Sweet-Scented Jonquils

Very much prized for their deliciously scented golden flowers; perfectly hardy in gardens or naturalized, also admirably adapted to indoor culture in pots of soil.

We frequently receive orders for Jonquils when the Giant Trumpet Daffodils are desired. We ask our patrons to select varietal name in order to avoid the confusion caused thereby. The Jonquils listed below belong to a distinct type of the Narcissus family. The foliage is rush-leaved, and the flowers are borne in clusters of four or five on each stem, and should not be confused with the Giant and Medium Trumpet Daffodils in our list. We have decided to discard the common Single and Double Jonquils in favor of the following sorts.

Giant Campernelle rugulosus. Much larger and finer than the old favorite Campernelle Jonquils; a much freer bloomer and much more desirable, especially for forcing. Beautiful, single, yellow, star-shaped flowers, exquisitely imbricated, borne in clusters of four to six on a stem; delightfully fragrant. Also very hardy and valuable for outdoor planting. 90 cts. per doz., \$6 per 100, \$55 per 1,000.

Rugulosus, Double. The double form of the large-flowering Campernelle Jonquil. Large, double, yellow flowers; very fragrant and much superior to the common Double Jonquil. Height 20 inches. 90 cts. per doz., \$6 per 100, \$55 per 1,000.

CHINESE SACRED LILY

The "Shui Sin Far," or Water Fairy Flower, Joss Flower or Flower of the Gods, etc., as it is called by the celestials, is a variety of Narcissus, bearing in profusion chaste flowers of silvery white, with golden yellow cups. They are of exquisite beauty and entrancing perfume.

The bulbs, of large size and great vitality, are of luxuriant growth, producing several spikes of flowers; the incredibly short time required to bring bulbs into bloom (four to six weeks after planting) is one of the wonders of nature. You can almost see them grow, succeeding almost everywhere and with everybody. They do well in pots of earth, but are more novel and beautiful grown in shallow bowls of water, with enough fancy pebbles to prevent them from toppling over when in bloom. A dozen bulbs, started at intervals will give a succession of flowers throughout the winter. We have found that first-size bulbs, as generally sent out by other houses, do not flower satisfactorily, and we therefore offer only Mammoth and Jumbo sizes.

	Each	Doz.	100
Mammoth bulbs.....	\$o 25	\$2 50	\$20 00
Jumbo bulbs.....	35	3 50	27 50

GLASS BOWLS, for one bulb of Chinese Lily, 35 cts. each, \$3.50 per doz.; for 6 bulbs, 50 cts. each, \$5 per doz.

PEBBLES. Carefully screened and selected. Per quart box, 20 cts., 2 boxes for 35 cts.

JAPANESE LILIES (Cold Storage)

Many of our patrons who have greenhouse facilities are desirous of planting bulbs of some of the varieties of Japanese Liliums during the summer months for flowering during the late autumn and Christmas time and to these we offer the following varieties: *L. speciosum album*, or the pink form, *Magnificum* (flowers in 5 months).

L. speciosum album. White. 9- to 11-inch bulbs (50 per case).....\$25 00
L. speciosum magnificum. Pink. 9- to 11-inch bulbs (50 per case).... 25 00



Chinese Sacred Lily

CROCUS

Crocuses, among the earliest bulbs to flower, are most effective when planted in masses on the lawn, or arranged in three or four rows of one color in the border. They are perfectly hardy, and may be left in the ground for three or four years after planting, without being disturbed. The best method is to scatter the bulbs about the lawn and use an ordinary garden dibble or "Slim Jim" trowel, inserting several bulbs in each spot. This makes a very pretty effect in early spring, and the foliage and tops may be safely cut along with the grass when the first mowing is made. They are very ornamental when flowered in pots of eight to ten bulbs to a 5-inch size. They will not flower if exposed to heat, nor must too severe forcing be attempted. After potting set bulbs in a cool cellar and water well. Leave them about six weeks until they are thoroughly rooted and then bring to the light of the conservatory or sunny window. Care should be taken to cover the bulbs about 1 inch, whether planted outdoors or in pots, as planting too deep causes them not to flower.

Any of the following, 45c. per doz., \$3 per 100, \$28 per 1,000

Purpurea Grandiflora. Best dark blue.

Julia Culp. Large-flowering purple.

Kathleen Parlow. Purest white; fine large flowers.

La Majestueuse. White, striped purple.

Mont Blanc. An old favorite; large; pure white.

Yellow Mammoth. The largest flowering sort of this color.

S. & W. Co.'s Special Mixture. A special mixture of all colors and shades. 30 cts. per doz., \$2 per 100, \$18 per 1,000.



Giant-flowering Crocus, Kathleen Parlow

SPIREA

November delivery

This beautiful pot plant, usually grown by the florist for Easter, we are able to offer in three named varieties, in clumps suitable for growing in 6-in. pots.

Gladstone. Large spikes of pure white flowers, borne on strong stems 18 inches high.

Queen Alexandra. A popular variety on the order of Gladstone, but of a pale pink color.

Peach Blossom. A very lovely shade of peach-blossom pink. A very free-flowering variety.

Strong Clumps of any of the above 3 varieties, \$1 each, \$10 per doz., \$75 per 100

GIANT FREESIAS

Without doubt the most sweetly scented flower grown; a single bloom permeates the living-room with its delicate perfume. Although they are quite popular and very easily raised, we would suggest the following treatment:

Procure the bulbs as early as possible, and plant them in successive batches from August to October, using from six to twenty-five bulbs for a single pan. The soil should be a mixture of loam, to which must be added leaf-mold and sand. The bulbs planted early, say August and September, may be placed outdoors in a sheltered spot until cold weather sets in; of course they must be regularly watered and kept growing all the time. In October, before frosts appear, the pots should be placed in frames, if possible, or near the window of an unheated room. Not before November must the young plants be brought to gentle heat, and if thus cared for they will flower perfectly in January. The foliage of the Freesias is very fine and slender and must be supported with light stakes placed around the outer edge of the pans. The glistening, pure white flowers are borne on long stems, and are very valuable for cutting.

S. & W. CO.'S IMPROVED PURITY

Through painstaking effort our grower of Freesia Purity has maintained such a quality in our strain of this very desirable cut-flower by careful selection as to justify us in offering it as an improved strain.

	Doz.	100	1,000
Monster bulbs.....	\$0 75	\$5 00	\$45 00
Jumbo bulbs.....	60	4 50	40 00
Mammoth bulbs.....	50	3 50	30 00

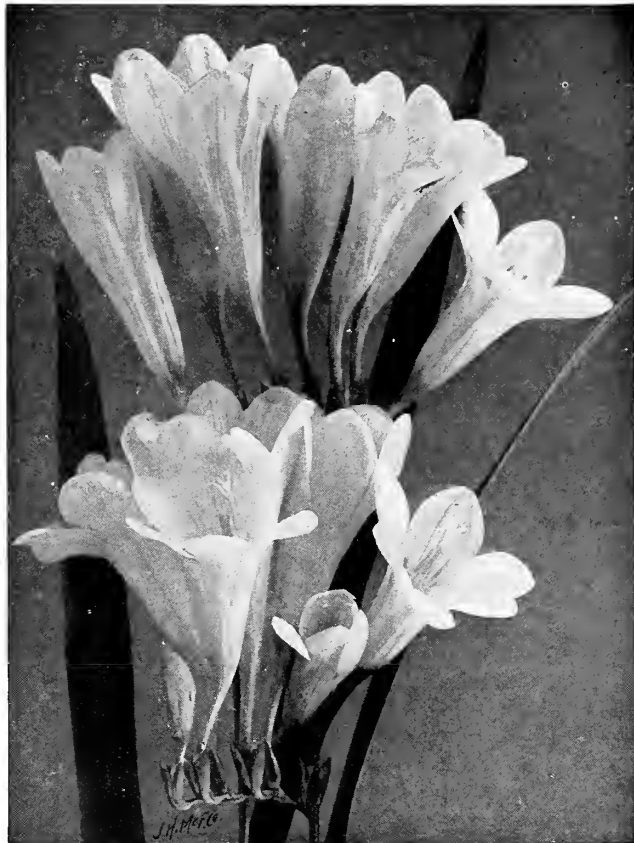
NEW FREESIAS

Aurora. A beautiful large-flowering yellow, suffused with orange. A very lovely variety. **\$1.50 per doz., \$10 per 100, \$90 per 1,000.**

California. A large flower of bright golden yellow; extra-fine strong grower and long stems. One of the very finest yellow Freesias. **\$1.50 per doz., \$10 per 100, \$90 per 1,000.**

Carrie Budau. A beautiful lavender-pink, much on the order of General Pershing, but of a more beautiful bright pink shade. The flowers are larger and the stems stronger. **\$1.50 per doz., \$10 per 100, \$90 per 1,000.**

Fischer's Splendens. This comparatively new Freesia, introduced by the originator of Purity, stands in a distinct class. The flowers are equal in size to Purity and the plant just as vigorous. The stems are long and stiff, bearing as many flowers as Purity, of a beautiful deep lavender color which seems to be well retained throughout the life of the flower. **\$1 per doz., \$8 per 100, \$75 per 1,000.**



Freesia, S. & W. Co.'s Improved Purity

June Michelsen. Large flowering deep rose-pink with light blush throat; three lower petals are veined purplish crimson with a deep yellow blotch on center petal. Good stiff stem and strong constitution. **\$1.50 per doz., \$10 per 100, \$90 per 1,000.**

LILY-OF-THE-VALLEY

We import especially from abroad each year large quantities of Lily-of-the-Valley in pip form as well as in clumps. If you are planning on making a bed of Lily-of-the-Valley in some shady place in your garden, you will find the planting of clumps quite the easiest method. We carry pips principally for those of our patrons who wish to grow them in pots or flats indoors.

SUPERIOR LILY-OF-THE-VALLEY PIPS

In judging the price of our Lily-of-the-Valley, please remember that the best is the cheapest. Our Valley is positively among the best. Is bought at open prices, with instructions for a selection of the best-developed pips. Our long experience and large importations have commanded this extra selection. Introduced a few years ago, it has now become famous, being forced very extensively by a large number of celebrated Lily-of-the-Valley growers. Our Lily-of-the-Valley produces strong spikes of flowers, about 15 inches in height, bearing from twelve to twenty extra-large, pure white bells, which are delightfully fragrant. For forcing, these pips are the very best that can be planted. **New crop, November delivery, 25 pips \$1.50, 100 pips \$5, 1,000 pips \$45.**

COLD STORAGE LILY-OF-THE-VALLEY

250 pips \$16, 500 pips \$30, 1,000 pips \$55.

LILY-OF-THE-VALLEY CLUMPS

For Outdoor Planting

Our Lily-of-the-Valley Clumps are extra-selected, well grown and, if planted outdoors by the middle of April, will flower splendidly during May. If grown under the proper conditions, these clumps will increase rapidly, and every spring produce a profusion of dainty flowers. Extra-strong clumps, **50 cts. each, \$5 per doz., \$35 per 100.**



S. & W. Co.'s Lily-of-the-Valley

HARDY LILIES

We especially recommend deep planting, say, from 6 to 8 inches; varieties like Speciosums require at least 8 inches, with an ample amount of sand beneath the bulb to insure proper drainage. Cover the beds with leaves or litter during winter. Lilies thrive well in borders, formal gardens or shrubbery, and usually flower at a time when the shrubbery has ceased blooming, adding increased interest. The following varieties have proved to be sorts that may be planted in the fall or spring with excellent results. We frequently receive orders for *Lilium candidum* for spring delivery. This Lily arrives from France in September, and must be planted by November 1.

Most Lily Bulbs, being of late maturity, do not arrive in our country until October and November, which is conceded to be the best time to plant. Where the ground is liable to freeze before late Lilies arrive, it should be mulched with leaves or manure.

LILIUM CANDIDUM (Madonna Lily)

Choice Northern-Grown. Arrive in August or September

The favorite Lily of the old-fashioned garden, produces strong, stiff stems, studded with a mass of pure, glistening white flowers, that enliven the perennial flower-garden or, for contrast with the beautiful green shrubs of the June garden, are unequalled, frequently growing 4½ feet high.

Plant some bulbs during September and October and enjoy a big crop of flowers next June; or pot up, store in coldframe, and force for early winter in the greenhouse or conservatory. Our bulbs of this splendid Lily are grown in northern France, and are of the true thick-petaled variety, which is much superior in habit and flowering qualities to that of the cheap, loose, southern-grown bulbs.

	Each	Doz.	100
First Size	\$0 30	\$3 00	\$20 00
Mammoth Bulbs	40	4 00	30 00
Jumbo Bulbs	50	5 00	40 00



Lilium candidum



Lilium auratum (Golden-rayed Lily of Japan)

LILIUM AURATUM

The Golden-rayed Lily of Japan

November and December Delivery

One of the finest and most popular of the hardy garden Lilies. It thrives best in locations where the lower portion of the plant will be partially sheltered from the hot sun, as among peonies or herbaceous plants in the hardy border, where groups of six to twelve of these Lilies produce a stately and magnificent effect. The flowers are pure white, thickly studded with crimson spots, while through the center of each petal runs a clear golden band. Fully expanded, the flowers measure nearly a foot across, are produced abundantly from June to October, and possess a most delicious fragrance. 3 to 5 feet.

	Each	Doz.	100
9 to 11 in. in circum.	\$0 45	\$4 50	\$35 00
11 to 13 in. in circum.	65	6 50	50 00

LILIUM REGALE (A Regal Beauty)

October Delivery

The flowers are white, slightly suffused with pink, with a beautiful shade of canary-yellow at the center, blending out part way up the trumpet. The fragrance is fascinating, similar to the jasmine. A splendid hardy Lily for the garden, flowering about July 1. Well-grown bulbs often produce five to eight blooms. 75 cts. each, \$7.50 per doz., \$60 per 100.

STUMPP & WALTER CO.'S SELECTED BULBS



Lilium speciosum magnificum

Lilium speciosum magnificum

Oriental Orchids. November and December Delivery

Words cannot describe the beauty of this variety. Frosted white, spotted, clouded and bordered with deep pinkish crimson. A much superior variety to the Roseum, Rubrum or Melpomene of the Speciosum type. For the border, among hardy plants or naturalized among rhododendrons, this is an equal favorite with the *Lilium auratum* offered on the previous page. Splendid for pot culture as well. Blooms outside during August.

	Each	Doz.	100
9 to 11 in. in circum.....	\$0 45	\$4 50	\$35 00
11 to 13 in. in circum.....	65	6 50	50 00

Lilium speciosum album

November and December Delivery

The white Speciosum, which is usually grown with Magnificum and *Lilium auratum*, is a very dainty Lily.

	Each	Doz.	100
8 to 9 in. in circum.....	\$0 45	\$4 50	\$35 00
9 to 11 in. in circum.....	65	6 50	50 00

OTHER HARDY LILIES

October Delivery

HANSONII. Attains the height of 3 to 5 feet. Reflexed blossoms 2 inches across; petals bright orange-yellow, faintly spotted brown, eight to twelve in a cluster. Flowers in June or early July. **75 cts. each, \$7.50 per doz., \$60 per 100.**

HENRYI. Similar to Speciosum. Beautiful orange-yellow flowers with a green band. Hardy and easy to grow, blooming in August and September. **75 cts. each, \$7.50 per doz., \$60 per 100.**

PARDALINUM. A California variety bearing twelve to thirty flowers on stems 4 to 6 feet high, bright orange, spotted dark crimson. Flowers in July. **40 cts. each, \$4 per doz., \$30 per 100.**

SUPERBUM. A native type growing 3 to 6 feet high, frequently bearing twenty to thirty flowers of a brilliant orange-red. Blooms in July. **30 cts. each, \$3 per doz., \$20 per 100.**

TENUIFOLIUM. A very bright-colored Lily with finely cut foliage, slender stems, and beautifully shaded coral-red flowers. Blooms during June. **40 cts. each, \$4 per doz., \$30 per 100.**

TIGRINUM, Single. (Single Tiger Lily.) Orange-red, spotted black. **30 cts. each, \$3 per doz., \$20 per 100.**

TIGRINUM, Double. (Double Tiger Lily.) **30 cts. each, \$3 per doz., \$20 per 100.**

LILY BULBS FOR INDOOR GROWING

CALLA LILIES

These like a stiff, clayey soil with a small quantity of shredded cow-manure. Bulbs should be set with the crown, or top, protruding just above the surface. When in growing condition, warm water given several times during the week will hasten the flowering period and increase the number of blooms. When using the large-sized bulbs, plant but one in a pot; smaller ones, two. We call especial attention to the Yellow Calla, which is one of the grandest varieties in cultivation, and most valuable for house or conservatory decoration. See the description opposite. Plant Callas indoors only in the fall of the year.

WHITE CALLA LILY—

	Each	Doz.	100
Jumbo size	\$0 50	\$5 00	\$40 00
Mammoth size	40	4 00	30 00
First size	25	2 50	20 00

YELLOW CALLA LILY. A grand novelty—one that should be planted extensively. The deep golden yellow flowers are truly magnificent and produced in abundance. The green foliage is spotted creamy white, which adds to its beauty.

	Each	Doz.	100
First-size bulbs	\$0 40	\$4 00	\$30 00
Mammoth bulbs	50	5 00	40 00

EASTER LILIES

We offer three types of the Longiflorum Lily usually grown by the florist. Of the three types we recommend *Lilium formosum* as the best for private conservatory growing.

LILIUM HARRISII—

These bulbs usually arrive from Bermuda in

	Each	Doz.	100
July.			
7 to 9 inches in circumference.....	\$0 60	\$6 00	\$45 00
9 to 11 inches in circumference.....	1 00	10 00	90 00

L. LONGIFLORUM FORMOSUM—

We have contracted for and expect some of each of the following sizes to arrive about Sept. 1.

7 to 9 inches in circumference.....	50	5 00	40 00
9 to 10 inches in circumference.....	80	8 00	65 00
11 to 13 inches in circumference.....	1 00	11 00	90 00

L. LONGIFLORUM GIGANTEUM—

We have contracted for and expect some of each of the following sizes to arrive October or early November.

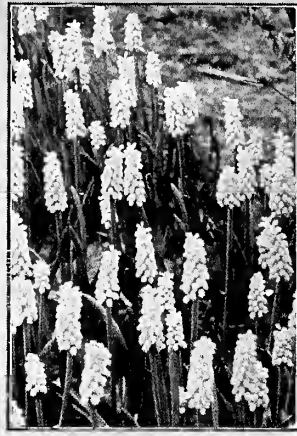
7 to 9 inches in circumference.....	40	4 00	30 00
9 to 10 inches in circumference.....	55	5 50	45 00
10 to 12 inches in circumference.....	75	7 50	60 00



Chionodoxa Lucilia



Fritillaria Meleagris



Grape Hyacinths



Spanish Iris

AMARYLLIS

Giant-flowering Vittata Hybrids.

Conceded to be the most noble and magnificent section of the Amaryllidaceae. It would require a great amount of space to offer them with descriptions of the several representative types, so we confine ourselves to listing in two general classes: Red ground, variegated with white; white ground, variegated with red. The red varies in tones from a brilliant fiery color to crimson; the variegation is sometimes a broad blaze of white in the center of each petal; again, the ground-color is white, abundantly streaked with red or crimson. The flower-spikes are from 1 to 3 feet high, the foliage long and graceful. Flowers, borne in clusters, are often 8 inches across. Extra-strong bulbs, \$1 each, \$10 per doz., \$75 per 100.

ANEMONES (Windflower)

These popular flowers of French origin are exceedingly useful, as a decorative plant for house or garden, and fine for cutting. If planted outdoors in the fall they must be well protected with leaves or other litter; they may also be planted in the spring in well-drained soil, and will flower during the summer, starting in May. When planted in pots, place twelve or more in a cluster and store away, if possible, in a coldframe until February 1; if carefully watered, when brought into the house they will flower abundantly.

Excelsior Mixture. We consider this the finest strain of single-flowering Anemones as yet raised. The plants are taller in growth than the St. Brigid and more single. They contain many fine shades of blue, white, and scarlet. \$1 per doz., \$7.50 per 100.

CHIONODOXA (Glory-of-the-Snow)

An early-flowering spring bulb for borders or rocky. Produces flower-spikes bearing ten to fifteen scilla-like flowers. Perfectly hardy and should be planted close together for effect.

Luciliae. Deep blue, with a white center. Selected mother bulbs, 60 cts. per doz., \$4 per 100, \$35 per 1,000.

Luciliae alba. Beautiful white form of the above. 75 cts. per doz., \$6 per 100, \$55 per 1,000.

Sardensis. The gentian-blue; very striking. Selected mother bulbs, 60 cts. per doz., \$4 per 100, \$35 per 1,000.

ERANTHIS HYEMALIS (Winter Aconite)

Early in spring the golden blossoms look charming, resting on an emerald-green cushion of leaves, and forming a striking contrast to the snowdrops, scillas, and chionodoxas. The foliage remains long after the flowers, making the plant especially valuable in moist situations, such as under trees, which the Winter Aconite enjoys, and where few other flowering plants will thrive. 3 to 8 inches high. 50 cts. per doz., \$3.50 per 100, \$30 per 1,000.

FRITILLARIA IMPERIALIS

(Crown Imperials)

Well-known hardy border plants, bearing clusters of immense, pendent, bell-shaped flowers, surmounted with a tuft of green leaves. They are excellent for hardy borders and may be left undisturbed for years.

	Each	Doz.	100
Aurora. Orange	\$0 25	\$2 50	\$20 00
Crown on Crown. Several whorls of red flowers, one above the other	25	2 50	20 00

FRITILLARIA MELEAGRIS

Singular, dwarf, spring-flowering plants, bearing large, pendent bell-shaped flowers of various colors, in yellow, white, black, purple, striped and splashed, and checkered in the most curious way. They are invaluable for pot culture, and exceedingly pretty when grown in large groups in the garden border or wild garden in a dry situation.

	Doz.	100	1,000
Alba. White	\$1 00	\$8 00	\$75 00
Calypso. Purple	1 00	8 00	75 00
Mixed. Select mixtures	80	6 00	55 00

GRAPE HYACINTHS

Very beautiful little flowers for planting in masses, either in shade or where exposed to the sun. When planted out in herbaceous borders, where they can be left undisturbed, they do exceedingly well, each year adding to their already profuse-blooming qualities. Bloom outdoors during May. They are also excellent for pot culture.

Heavenly Blue. This variety is the largest and best of the Grape Hyacinths. The bells are large and form a fine truss. Splendid effects are produced by massing in the garden or border. 50 cts. per doz., \$3.50 per 100, \$30 per 1,000.

Album. A very beautiful white form of the above and excellent to use for contrasting with Heavenly Blue. 50 cts. per doz., \$3.50 per 100, \$30 per 1,000.

BULBOUS IRISES (Spanish and Dutch)

We are listing below what we believe to be the best distinct colors in Spanish and Dutch Irises, as well as several hybrid forms, as Filifolia and Tingitana. They are excellent for growing under glass and may be grown in the garden also. When planted outdoors they should be covered with a heavy mulch and the bulbs planted in a well-drained border, about 5 inches deep. They bloom outdoors in the vicinity of New York late in May.

Anton Mauve. This splendid Dutch Iris has become very popular. It is a uniform soft blue, and the flower very large and substantial	Doz.	100	1,000
	\$1 00	\$7 00	\$65 00

Cajanus. Considered as being the finest uniform bright yellow Spanish Iris	85	6 00	55 00
---	----	------	-------

Hart Nibbriz. A bright clear blue, said to be the finest of its color	1 00	7 00	65 00
--	------	------	-------

Imperator. A very popular variety for indoor growing. It is rich deep dark blue and a strong grower, making a magnificent specimen when well grown	1 75	12 00	100 00
---	------	-------	--------

King of the Whites. The best pure white Spanish Iris	85	6 00	55 00
---	----	------	-------

Ophir d'Or. We consider this on the order of Cajanus in our list, but of a deeper tone of pure yellow	85	6 00	55 00
--	----	------	-------

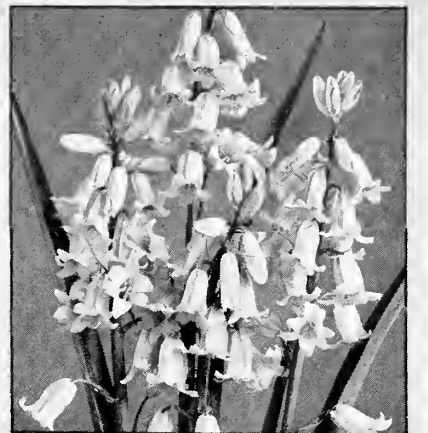
Tingitana. Similar in type and size of bloom to Imperator, but the color of the flower is a shade lighter blue. A fine, strong-growing variety. Like Imperator it is excellent for pot culture; if well rooted and allowed to come gently will flower indoors in March	1 75	12 00	100 00
---	------	-------	--------



Snowdrops



Ranunculus



Scilla nutans

GLADIOLUS COLVILLEI

Delivery in
October and November

Blushing Bride. A very delicate pink with bright carmine blotch in the throat. 80 cts. per doz., \$7 per 100, \$60 per 1,000
Peach Blossom. A very lovely shade of soft pink on the order of the Killarney rose. 80 cts. per doz., \$7 per 100, \$60 per 1,000.

IXIAS

The Ixia is a beautiful little winter-flowering bulb, with long, slender, graceful spikes of bloom. The colors are rich, varied and beautiful, the center always differing in color from the other parts of the flower, so that the blossoms, expanding in the sun's rays, present a picture of gorgeous beauty. Very desirable for pots.

	Doz.	100
Althæa. Large; white, with purplish carmine eye.....	\$0 85	\$6 00
Aurantiaca major. Golden yellow, with large dark eye.....	85	6 00
Craterioides major. Bright scarlet; very early; forces well.....	I 30	10 00
Hubert. Deep maroon; very beautiful.....	70	5 00
Mozart. Pink; lovely color.....	85	6 00
Finest Mixed	50	3 50

OXALIS

An unrivaled winter-flowering pot-plant of the easiest culture, succeeding with everybody

This is one of the finest flowering plants for pot culture that we have ever seen; it is such a strong, luxuriant grower that five or six bulbs will be sufficient for a 6 or 8-inch pot. Place in a dark, cool position for several days to root thoroughly, and remove to a sunny situation in the window or conservatory in a temperature of about 60 degrees Fahr., and the great profusion of bloom produced in uninterrupted abundance for weeks will astonish and delight you.

Large-flowering. We have a very fine strain of these Oxalis. Flowers are large, and they may be had in blossom, by successful plantings, from October until May. We have four colors—Yellow, Pink, White, and Lavender. 50 cts. per doz., \$3.50 per 100.
Bermuda Buttercup. Bright sunny yellow. 50 cts. per doz., \$3.50 per 100.

RANUNCULUS

The bulbs of Ranunculus resemble tiny clumps of dahlia roots. They look as much like spiders as anything. The flowers are extremely double, almost globular, regular in outline, often exceed 2 inches in diameter, and are to be had in all the colors except blue. The colors are bright, clear, and pure.

CULTURAL DIRECTIONS

Here are cultural directions by a man who has scored a success with them: "The roots usually arrive in October and are better if placed in the soil as soon as time will permit, although it will not harm them seriously if they are packed away in dry sand in a cool shed or cellar for some weeks. Pots, pans, flats, or benches may be used for growing Ranunculuses, but flats and benches give me the most satisfactory results. I have had good success by using flats 5 inches deep, planting the roots in late October, then placing in coldframes and covering with dry leaves on the approach of severe weather, protecting sufficiently to exclude frost, and housing the flats from the early part of February onward.

"The compost used is light but tolerably rich, consisting of three parts loam, one part leaf-mold, one part old, well-decayed manure passed through a 1/2-inch screen, and a generous dash of sharp sand. The flats should be well drained. "For those growing a limited number, flats are to be recommended, but where bench space will permit, the roots can be planted out 4 to 5 inches apart each way.

RANUNCULUS, continued

"A violet temperature, 40 to 45 degrees at night, is just what Ranunculuses need, and, as they do not make a heavy growth which shades the violets appreciably and do not impoverish the soil, this method of culture can with confidence be recommended.

French Mixed. We offer a mixture of all colors of the French Ranunculus at 75 cts. per doz., \$5 per 100, \$45 per 1,000.

Turban. We offer five distinct colors of this splendid type.

Hercules. Pure white.

Rosalia. Rose.

Primrose. Pale primrose.

Source d'Or. Yellow, brownish flaked.

Romano. Fine scarlet.

\$1 per doz., \$7 per 100, \$65 per 1,000

SNOWDROPS

These elegant little flowers, the first to open in spring, should be found in every garden, not only because they are the earliest spring flowers, but because they are the loveliest. The Snowdrop thrives in almost any situation or soil, and should be planted as early in the autumn as possible, as they suffer much if left long out of the ground.

	Doz.	100	1,000
Single Snowdrops. Selected bulbs.....	\$0 60	\$4 00	\$35 00
Double. Selected bulbs.....	70	5 00	45 00

SCILLAS (Wood Hyacinth, Siberian Squill, or English Bluebell)

Campanulata (Wood Hyacinth)

Bears spikes, 15 inches high, of bell-like flowers, during early May. Plant 5 or 6 inches deep in shady situations. Very effective for borders; will grow under fir or pine trees.

Alba maxima. Clear white, with very fine, large bells. 75 cts. per doz., \$5 per 100, \$45 per 1,000.

Blue Queen. Erect spikes of porcelain-blue flowers; strong grower. 75 cts. per doz., \$5 per 100, \$45 per 1,000.

Excelsior. Bright deep blue, with large bells. 75 cts. per doz., \$5 per 100, \$45 per 1,000.

Rose Queen. Bells of soft lilac-rose; very pretty. 75 cts. per doz., \$5 per 100, \$45 per 1,000.

Scilla sibirica (Siberian Squill)

Spikes 3 to 4 inches high, of small, drooping, bell-like flowers. Fine for massing in borders or naturalizing. Plant 3 to 4 inches deep. Blooms in April.

Blue. Splendid for massing. Jumbo bulbs, 75 cts. per doz., \$5 per 100, \$45 per 1,000.

White. A variety sometimes used for interspersing with the blue sorts. 75 cts. per doz., \$5 per 100, \$45 per 1,000.

Scilla nutans (English Bluebell)

The flowers of this lovely Scilla are similar in type to *S. campanulata* listed above, but the spikes are not as tall and are more arching in character. Visitors to the English countryside during Daffodil time will doubtless remember this pretty flower which is a native of their woodlands and blooms the same time as the Daffodils. 40 cts. per doz., \$2.50 per 100, \$20 per 1,000, \$175 per 10,000.

German Iris, Japanese Iris, Herbaceous Peonies

The Best Three Hardy Perennials Which do Best if Planted in the Autumn

We offer below 12 varieties of German Iris, also the Siberian Blue, 8 varieties of Japanese Iris, and 20 of the best varieties of Herbaceous Peonies.

GERMAN IRIS (*Iris germanica*)

- Beethoven.** Standards blue; falls purple. 20 cts. each, \$2 per doz., \$15 per 100.
- Glory of Reading.** Standards deep blue; falls deep royal purple; conspicuous orange beard. 50 cts. each, \$5 per doz., \$35 per 100.
- Her Majesty.** Standards rose-pink; falls bright crimson. 35 cts. each, \$3.50 per doz., \$25 per 100.
- Lohengrin.** Standards and falls are a uniform shade of violet-mauve. 30 cts. each, \$3 per doz., \$20 per 100.
- Loreley.** Standards light yellow; falls ultra-marine blue. 20 cts. each, \$2 per doz., \$15 per 100.
- Montezuma.** Standards deep golden, minutely dotted brown; falls yellow and white, veined purple and dotted brown. 35 cts. each, \$3.50 per doz., \$25 per 100.
- Mrs. H. Darwin.** Pure white; falls slightly violet at base. 35 cts. each, \$3.50 per doz., \$25 per 100.
- Nibelungen.** Standards olive-green, falls yellow-purple and white. Very distinct. 25 cts. each, \$2.50 per doz., \$20 per 100.
- Pallida Dalmatica.** Standards lavender; falls clear, deep lavender. 30 cts. each, \$3 per doz., \$20 per 100.
- Pauline.** Standards and falls are a rich pale pansy-violet. 20 cts. each, \$2 per doz., \$15 per 100.
- Queen of May.** Uniform lovely soft rose-lilac. 35 cts. each, \$3.50 per doz., \$25 per 100.
- Siberian Blue.** Clear sky-blue. While not of a German Iris type, flowers same time and is a wonderful border variety. 30 cts. each, \$3 per doz., \$20 per 100.
- Wyomissing.** Standards white, suffused delicate soft rose; falls deep rose. 50 cts. each, \$5 per doz., \$35 per 100.

JAPANESE IRIS

The Japanese Iris usually flowers after the German. They are much admired on account of their variety of color and large size. We offer eight distinct varieties. Six-petal varieties are termed double; three-petal varieties, single.

- Amethyst.** Single. Light lavender or amethyst.
- Azure.** Double. Mauve-blue, with a darker halo surrounding yellow blotch at the base of the petals.
- Datedogu.** Single. Standards claret and white, falls claret-red with orange blotches.
- Kamata.** Single. Sky-blue, veined white.
- Mount Hood.** Double. Light blue, shaded darker; orange center.
- Pink Progress.** Single. Ash-gray-lavender; clear blue halo.
- Pyramid.** Double. Violet-purple, veined white.
- Shadow.** Single. Deep violet-purple.

Any of the above, 50 cts. each, \$5 per doz., \$35 per 100



German Iris

HERBACEOUS PEONIES

We offer twenty fine varieties of this beautiful hardy perennial. The roots are 3 to 5-eye divisions, and if planted during October and November will make strong plants next year. Specialists in this lovely flower prefer fall to spring planting.

- Albatre.** Milk-white, shaded ivory; center petals tinged lilac. \$1 each, \$10 per doz.
- Albert Crousse.** Large; compact, rose-white, flecked crimson. \$1.25 each, \$12.50 per doz.
- Alexandre Dumas.** Light violet-rose; creamy white collar of narrow petals. 75 cts. each, \$7.50 per doz.
- Couronne d'Or.** Pure white; tuft of center petals tipped carmine. 75 cts. each, \$7.50 per doz.
- Duchesse de Nemours.** White crown; sulphur-white collar. 75 cts. each, \$7.50 per doz.
- Festiva Maxima.** Large globular type; pure white, center prominently flecked crimson. Popular variety for cut flowers. 75 cts. each, \$7.50 per doz.
- Floral Treasure.** Pale lilac-rose; very fragrant. 75 cts. each, \$7.50 per doz.
- La Coquette.** Guards and crown light pink; collar rose-white, center flecked crimson. 75 cts. each, \$7.50 per doz.
- L'Indispensable.** Lilac-white, shading to pale violet-rose toward center. \$1 each, \$10 per doz.
- Livingstone.** Pale lilac-rose, with silver tips; central petals flecked carmine. \$1.25 each, \$12.50 per doz.
- Marguerite Gerard.** Pale hydrangea-pink, fading to nearly white; central petals flecked carmine. \$1 each, \$10 per doz.
- Mme. Calot.** Pale hydrangea-pink; center shading darker; collar tinged silver. \$1 each, \$10 per doz.
- Marie Lemoine.** Pure white with cream center; carmine tip. \$1 each, \$10 per doz.
- Mme. Coste.** Guards and center hydrangea-pink; collar cream-white. 75 cts. each, \$7.50 per doz.
- Mme. Crousse.** Pure white; center flecked crimson. \$1 each, \$10 per doz.
- Mme. de Verneville.** Blush when opening, fading pure white; prominent carmine specks. 75 cts. each, \$7.50 per doz.
- Mons. Dupont.** Milk white center, splashed crimson. \$1 each, \$10 per doz.
- Mons. Jules Elie.** Glossy lilac-pink. \$1.50 each, \$15 per doz.
- Philomele.** Guard bright violet-rose; center of narrow amber-yellow petals. \$1 each, \$10 per doz.
- Solange.** Outer petals delicate lilac-white, deepening toward the center, with a salmon shading. This variety is regarded by the American Peony Society as one of the best three in the world today. \$6 each, \$60 per doz.

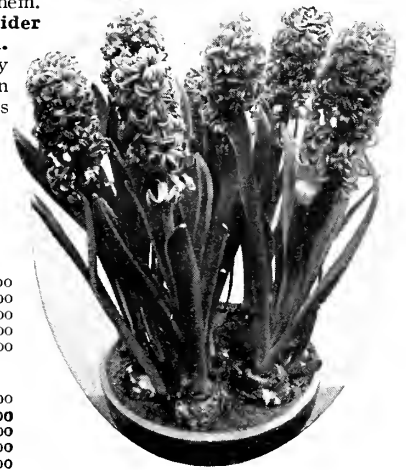


Flowers in Your Home From Christmas to Easter

ONE of the most inspiring influences of the home is the flowers one grows. You can have an abundance of bulbs in flower from before Christmas until Easter if you plant a few bulbs suggested on this page. Six Paper-White Narcissus bulbs planted in a dish of pebbles will flower in ten weeks. The best Paper-White Narcissus bulbs cost \$7 per 100, and these flowers are sold in the florists' shops at \$2 to \$2.50 per dozen. You can grow your own and not only enjoy the fun of it, but save three profits—the grower's, the wholesale cut-flower dealer's, and the florist's.

SOIL AND CULTURE. The soil for potting bulbs should be light and rich; one-half good garden soil, one-fourth sand, and one-fourth rotted stable manure is about right, and this should then be thoroughly mixed and pulverized before using.

The pots, after placing part of a broken pot at the bottom to ensure drainage, should be filled to within 4 inches of the top, bulbs set in 2 to 4 inches apart, according to the variety, and then soil placed around them, just allowing the top of the bulb to protrude. After planting, water thoroughly, place in the coolest, darkest part of the cellar, away from the heat and light. Freezing will not hurt them. While in the cellar, look at occasionally and see that soil is moist not wet. **The main point to consider is to be sure they have made plenty of roots before being brought up to the living-room.** The Paper-White Narcissus, Freesias, and Crocuses offered on this page, planted October 15, may be brought to light December 1, and, in order to have them in succession, bring up a pot or pan every week until you have brought all your stock in. Early Tulips, Daffodils, and Hyacinths brought in January 15 should begin flowering from March 10 on.



Special List for Pot Culture

FREESIAS	Doz.	100
Purity. White Monster Bulbs.....	\$0 75	\$5 00
CROCUSES (Selected Bulbs)		
Purpurea Grandiflora. Blue.....	45	3 00
Kathleen Parlow. White.....	45	3 00
La Majestueuse. White, striped purple.....	45	3 00
Yellow Mammoth. Yellow.....	45	3 00
TULIPS		
Golden Queen. Golden yellow.....	85	6 00
Belle Alliance. Scarlet.....	85	6 00
White Hawk. Fine white.....	85	6 00
Fred Moore. Ruddy apricot.....	80	5 50
Princess Wilhelmina. Dark pink ...	85	6 00

DUTCH HYACINTHS (First Size)		
One Bulb suggested for 5-inch pot; 4 for an 8-inch pot or pan.		
	Doz.	100
Lady Derby. Finest pink.....	\$3 50	\$25 00
La Victoire. Finest red.....	3 50	25 00
Grand Maitre. Finest blue.....	3 50	25 00
City of Haarlem. Finest yellow.....	3 50	25 00
La Grandesse. Finest white.....	3 50	25 00
NARCISSI or DAFFODILS (Very largest bulbs only)		
Paper-White. White.....	1 00	7 00
Golden Spur. Rich yellow.....	90	6 00
Emperor. Yellow.....	90	6 00
Empress. Yellow and white.....	1 00	7 00
Von Sion. Double yellow.....	90	6 00
Poeticus Ornatus. White.....	85	6 00



*Ten thousand saw I at a glance
Waving their heads in sprightly dance.*
—WORDSWORTH

Daffodils for Naturalizing (NARCISSI)

THERE is no more useful bulbous plant than the Daffodil for planting around the home-grounds. They are equally at home in the shady location of your shrubbery border or planted in clumps in your flower border, and are not subject to any particular rodent or pest.

After next year, they will not be allowed entry into our country. Ninety-five per cent of these beautiful bulbous plants are imported every year from Holland. We suggest to our patrons the advisability of planting liberal quantities this year, as bulbs procured from American-produced stocks after this year will be much higher in price.

We have arranged with our growers to produce large stocks of the best named varieties, and the mixtures are prepared to meet the various purposes and locations in which you desire to plant them.

FIVE SECTION OFFER

Prices of any of the following Sections, \$4.50 per 100, \$40 per 1,000, \$350 per 10,000

- | | |
|--------------------------------------|---|
| A. Daffodils for Shady Places | C. Daffodils, all Yellow Varieties |
| B. Daffodils for Open Places | D. Daffodils, all White Varieties |
| E. Daffodils, all Varieties | |

Scilla nutans cærulea (ENGLISH BLUEBELL)

This beautiful Scilla was imported into our country in considerable quantities up to 1919, when the Federal Horticultural Board excluded them. They have permitted their entry during 1924 and 1925, after which they expect again to restrict their importation. We advise our patrons to plant liberal quantities. They are used with excellent effect for edging bulb borders and are also splendid for naturalizing in the wild garden or planted among your daffodils.

STRONG BULBS, \$2.50 PER 100, \$20 PER 1,000, \$175 PER 10,000

STUMPP & WALTER CO., 30-32 BARCLAY STREET
NEW YORK CITY

